

Anti-DLX3 Antibody

Rabbit polyclonal antibody to DLX3

Catalog # AP60267

Product Information

Application	WB, IF/IC, IHC
Primary Accession	O60479
Other Accession	Q64205
Reactivity	Human, Mouse, Rat, Pig, Bovine, Dog, SARS
Host	Rabbit
Clonality	Polyclonal
Calculated MW	31738

Additional Information

Gene ID	1747
Other Names	Homeobox protein DLX-3
Target/Specificity	KLH-conjugated synthetic peptide encompassing a sequence within the center region of human DLX3. The exact sequence is proprietary.
Dilution	WB~~WB (1/500 - 1/1000), IHC (1/100 - 1/200), IF/IC (1/100 - 1/500) IF/IC~~N/A IHC~~WB (1/500 - 1/1000), IHC (1/100 - 1/200), IF/IC (1/100 - 1/500)
Format	Liquid in 0.42% Potassium phosphate, 0.87% Sodium chloride, pH 7.3, 30% glycerol, and 0.09% (W/V) sodium azide.
Storage	Store at -20 °C.Stable for 12 months from date of receipt

Protein Information

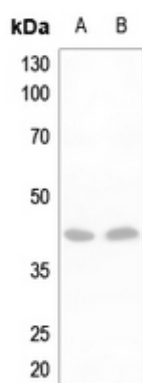
Name	DLX3
Function	Transcriptional activator (By similarity). Activates transcription of GNRHR, via binding to the downstream activin regulatory element (DARE) in the gene promoter (By similarity).
Cellular Location	Nucleus {ECO:0000255 PROSITE-ProRule:PRU00108}. Cytoplasm {ECO:0000250 UniProtKB:Q64205}

Background

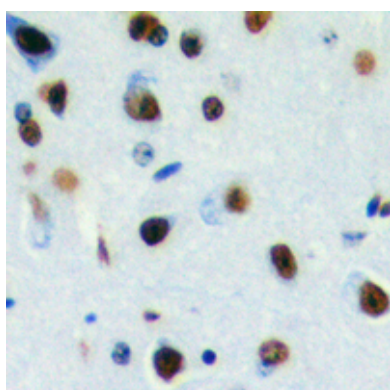
KLH-conjugated synthetic peptide encompassing a sequence within the center region of human DLX3. The

exact sequence is proprietary.

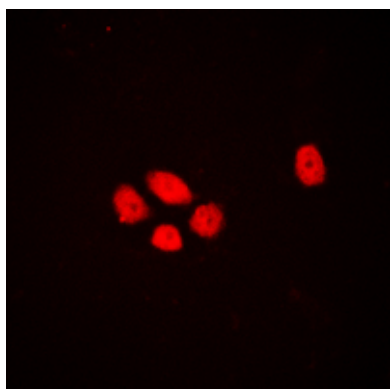
Images



Western blot analysis of DLX3 expression in mouse testis (A), rat testis (B) whole cell lysates.



Immunohistochemical analysis of DLX3 staining in human brain formalin fixed paraffin embedded tissue section. The section was pre-treated using heat mediated antigen retrieval with sodium citrate buffer (pH 6.0). The section was then incubated with the antibody at room temperature and detected using an HRP conjugated compact polymer system. DAB was used as the chromogen. The section was then counterstained with haematoxylin and mounted with DPX.



Immunofluorescent analysis of DLX3 staining in HEK293T cells. Formalin-fixed cells were permeabilized with 0.1% Triton X-100 in TBS for 5-10 minutes and blocked with 3% BSA-PBS for 30 minutes at room temperature. Cells were probed with the primary antibody in 3% BSA-PBS and incubated overnight at 4 °C in a humidified chamber. Cells were washed with PBST and incubated with a DyLight 594-conjugated secondary antibody (red) in PBS at room temperature in the dark.

Please note: All products are 'FOR RESEARCH USE ONLY. NOT FOR USE IN DIAGNOSTIC OR THERAPEUTIC PROCEDURES'.