

# Anti-G-CSF Antibody

Rabbit polyclonal antibody to G-CSF  
Catalog # AP60257

## Product Information

---

Application	WB
Primary Accession	<a href="#">P09919</a>
Other Accession	<a href="#">P09920</a>
Reactivity	Human, Mouse, Rat
Host	Rabbit
Clonality	Polyclonal
Calculated MW	22293

## Additional Information

---

Gene ID	1440
Other Names	C17orf33; GCSF; Granulocyte colony-stimulating factor; G-CSF; Pluripoietin; Filgrastim; Lenograstim
Target/Specificity	KLH-conjugated synthetic peptide encompassing a sequence within the center region of human G-CSF. The exact sequence is proprietary.
Dilution	WB~~WB (1/500 - 1/1000)
Format	Liquid in 0.42% Potassium phosphate, 0.87% Sodium chloride, pH 7.3, 30% glycerol, and 0.09% (W/V) sodium azide.
Storage	Store at -20 °C.Stable for 12 months from date of receipt

## Protein Information

---

Name	CSF3
Synonyms	C17orf33, GCSF
Function	Granulocyte/macrophage colony-stimulating factors are cytokines that act in hematopoiesis by controlling the production, differentiation, and function of 2 related white cell populations of the blood, the granulocytes and the monocytes-macrophages. This CSF induces granulocytes.
Cellular Location	Secreted.

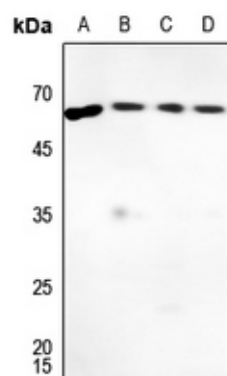
## Background

---

KLH-conjugated synthetic peptide encompassing a sequence within the center region of human G-CSF. The exact sequence is proprietary.

## Images

---



Western blot analysis of G-CSF expression in Hela (A), mouse lung (B), mouse muscle (C), rat lung (D) whole cell lysates.

Please note: All products are 'FOR RESEARCH USE ONLY. NOT FOR USE IN DIAGNOSTIC OR THERAPEUTIC PROCEDURES'.