

Anti-ICER Antibody

Rabbit polyclonal antibody to ICER

Catalog # AP60256

Product Information

| | |
|-------------------|--|
| Application | WB, IHC |
| Primary Accession | Q03060 |
| Other Accession | P27699 |
| Reactivity | Human, Mouse, Rat, Pig, Bovine, Drosophila |
| Host | Rabbit |
| Clonality | Polyclonal |
| Calculated MW | 37006 |

Additional Information

| | |
|--------------------|---|
| Gene ID | 1390 |
| Other Names | cAMP-responsive element modulator; Inducible cAMP early repressor; ICER |
| Target/Specificity | KLH-conjugated synthetic peptide encompassing a sequence within the center region of human ICER. The exact sequence is proprietary. |
| Dilution | WB~~WB (1/500 - 1/1000), IHC (1/100 - 1/200) IHC~~WB (1/500 - 1/1000), IHC (1/100 - 1/200) |
| Format | Liquid in 0.42% Potassium phosphate, 0.87% Sodium chloride, pH 7.3, 30% glycerol, and 0.09% (W/V) sodium azide. |
| Storage | Store at -20 °C.Stable for 12 months from date of receipt |

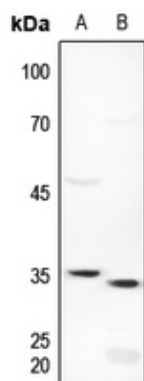
Protein Information

| | |
|-------------------|---|
| Name | CREM (HGNC:2352) |
| Function | Transcriptional regulator that binds the cAMP response element (CRE), a sequence present in many viral and cellular promoters. Isoforms are either transcriptional activators or repressors. Plays a role in spermatogenesis and is involved in spermatid maturation (PubMed: 10373550). |
| Cellular Location | Nucleus. |
| Tissue Location | Expressed in testes (round spermatids) (at protein level). Isoform 14 is the major activator form in testes |

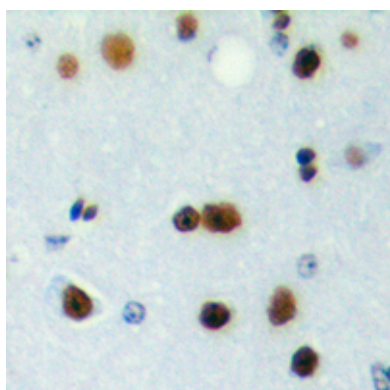
Background

KLH-conjugated synthetic peptide encompassing a sequence within the center region of human ICER. The exact sequence is proprietary.

Images



Western blot analysis of ICER expression in mouse kidney (A), rat lung (B) whole cell lysates.



Immunohistochemical analysis of ICER staining in human brain formalin fixed paraffin embedded tissue section. The section was pre-treated using heat mediated antigen retrieval with sodium citrate buffer (pH 6.0). The section was then incubated with the antibody at room temperature and detected using an HRP conjugated compact polymer system. DAB was used as the chromogen. The section was then counterstained with haematoxylin and mounted with DPX.

Please note: All products are 'FOR RESEARCH USE ONLY. NOT FOR USE IN DIAGNOSTIC OR THERAPEUTIC PROCEDURES'.