

Anti-CLOCK Antibody

Rabbit polyclonal antibody to CLOCK
Catalog # AP60253

Product Information

| | |
|--------------------------|--------------------------------------|
| Application | WB, IHC |
| Primary Accession | O15516 |
| Other Accession | O08785 |
| Reactivity | Human, Mouse, Rat, Pig, Chicken, Dog |
| Host | Rabbit |
| Clonality | Polyclonal |

Additional Information

| | |
|---------------------------|--|
| Other Names | BHLHE8; KIAA0334; Circadian locomoter output cycles protein kaput; hCLOCK; Class E basic helix-loop-helix protein 8; bHLHe8 |
| Target/Specificity | KLH-conjugated synthetic peptide encompassing a sequence within the center region of human CLOCK. The exact sequence is proprietary. |
| Dilution | WB~~WB (1/500 - 1/1000), IHC (1/100 - 1/200) IHC~~WB (1/500 - 1/1000), IHC (1/100 - 1/200) |
| Format | Liquid in 0.42% Potassium phosphate, 0.87% Sodium chloride, pH 7.3, 30% glycerol, and 0.09% (W/V) sodium azide. |
| Storage | Store at -20 °C. Stable for 12 months from date of receipt |

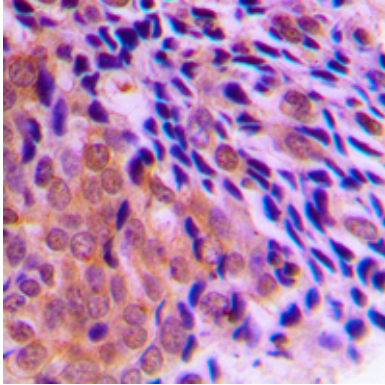
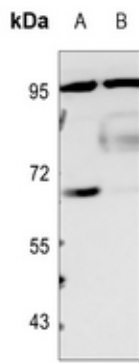
Protein Information

Background

KLH-conjugated synthetic peptide encompassing a sequence within the center region of human CLOCK. The exact sequence is proprietary.

Images

Western blot analysis of CLOCK expression in HEK293T (A), H446 (B) whole cell lysates.



Immunohistochemical analysis of CLOCK staining in human prostate cancer formalin fixed paraffin embedded tissue section. The section was pre-treated using heat mediated antigen retrieval with sodium citrate buffer (pH 6.0). The section was then incubated with the antibody at room temperature and detected using an HRP conjugated compact polymer system. DAB was used as the chromogen. The section was then counterstained with haematoxylin and mounted with DPX.

Please note: All products are 'FOR RESEARCH USE ONLY. NOT FOR USE IN DIAGNOSTIC OR THERAPEUTIC PROCEDURES'.