

Anti-CHRM1 Antibody

Rabbit polyclonal antibody to CHRM1

Catalog # AP60251

Product Information

Application	WB
Primary Accession	P11229
Other Accession	P12657
Reactivity	Human, Mouse, Rat, Monkey
Host	Rabbit
Clonality	Polyclonal
Calculated MW	51421

Additional Information

Gene ID	1128
Other Names	Muscarinic acetylcholine receptor M1
Target/Specificity	Recognizes endogenous levels of CHRM1 protein.
Dilution	WB~~WB (1/500 - 1/1000)
Format	Liquid in 0.42% Potassium phosphate, 0.87% Sodium chloride, pH 7.3, 30% glycerol, and 0.09% (W/V) sodium azide.
Storage	Store at -20 °C.Stable for 12 months from date of receipt

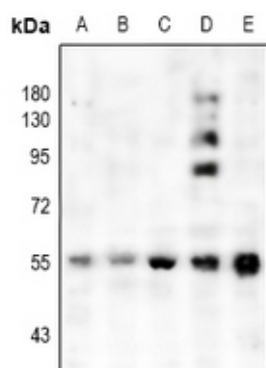
Protein Information

Name	CHRM1
Function	The muscarinic acetylcholine receptor mediates various cellular responses, including inhibition of adenylate cyclase, breakdown of phosphoinositides and modulation of potassium channels through the action of G proteins. Primary transducing effect is Pi turnover.
Cellular Location	Cell membrane; Multi-pass membrane protein. Postsynaptic cell membrane; Multi-pass membrane protein

Background

KLH-conjugated synthetic peptide encompassing a sequence within the center region of human CHRM1. The exact sequence is proprietary.

Images



Western blot analysis of CHRM1 expression in HEK293T (A), mouse brain (B), rat brain (C), LOVO (D), MCF7 (E) whole cell lysates.

Please note: All products are 'FOR RESEARCH USE ONLY. NOT FOR USE IN DIAGNOSTIC OR THERAPEUTIC PROCEDURES'.