

# Anti-CDCA2 Antibody

Rabbit polyclonal antibody to CDCA2

Catalog # AP60243

## Product Information

<b>Application</b>	WB, IHC
<b>Primary Accession</b>	<a href="#">Q69YH5</a>
<b>Reactivity</b>	Human, Rat
<b>Host</b>	Rabbit
<b>Clonality</b>	Polyclonal
<b>Calculated MW</b>	112676

## Additional Information

<b>Gene ID</b>	157313
<b>Other Names</b>	Cell division cycle-associated protein 2; Recruits PP1 onto mitotic chromatin at anaphase protein; Repo-Man
<b>Target/Specificity</b>	KLH-conjugated synthetic peptide encompassing a sequence within the center region of human CDCA2. The exact sequence is proprietary.
<b>Dilution</b>	WB~~WB (1/500 - 1/1000), IHC (1/100 - 1/200) IHC~~WB (1/500 - 1/1000), IHC (1/100 - 1/200)
<b>Format</b>	Liquid in 0.42% Potassium phosphate, 0.87% Sodium chloride, pH 7.3, 30% glycerol, and 0.09% (W/V) sodium azide.
<b>Storage</b>	Store at -20 °C.Stable for 12 months from date of receipt

## Protein Information

<b>Name</b>	CDCA2
<b>Function</b>	Regulator of chromosome structure during mitosis required for condensin-depleted chromosomes to retain their compact architecture through anaphase. Acts by mediating the recruitment of phosphatase PP1-gamma subunit (PPP1CC) to chromatin at anaphase and into the following interphase. At anaphase onset, its association with chromatin targets a pool of PPP1CC to dephosphorylate substrates.
<b>Cellular Location</b>	Nucleus. Note=Excluded from the nucleolus. Present in nucleoplasm throughout the G1, S and G2 stages of the cell cycle. During M phase, it becomes diffuse throughout the cell as the nuclear membrane breaks down, and faintly accumulates later on metaphase chromatin. As the cell progresses to anaphase, it accumulates on chromatin

**Tissue Location**

Ubiquitously expressed.

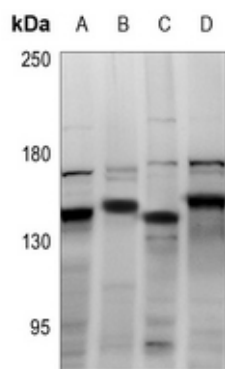
**Background**

---

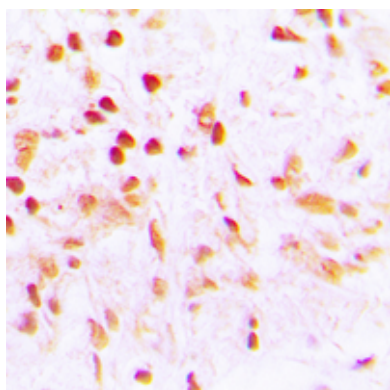
KLH-conjugated synthetic peptide encompassing a sequence within the center region of human CDCA2. The exact sequence is proprietary.

**Images**

---



Western blot analysis of CDCA2 expression in EC9706 (A), PC3 (B), C6 (C), HepG2 (D) whole cell lysates.



Immunohistochemical analysis of CDCA2 staining in human lung cancer formalin fixed paraffin embedded tissue section. The section was pre-treated using heat mediated antigen retrieval with sodium citrate buffer (pH 6.0). The section was then incubated with the antibody at room temperature and detected using an HRP conjugated compact polymer system. DAB was used as the chromogen. The section was then counterstained with haematoxylin and mounted with DPX.

Please note: All products are 'FOR RESEARCH USE ONLY. NOT FOR USE IN DIAGNOSTIC OR THERAPEUTIC PROCEDURES'.