

Anti-CD79b Antibody

Rabbit polyclonal antibody to CD79b

Catalog # AP60242

Product Information

Application	WB
Primary Accession	P40259
Other Accession	P15530
Reactivity	Human, Mouse, Rat
Host	Rabbit
Clonality	Polyclonal
Calculated MW	26048

Additional Information

Gene ID	974
Other Names	B29; IGB; B-cell antigen receptor complex-associated protein beta chain; B-cell-specific glycoprotein B29; Ig-beta; Immunoglobulin-associated B29 protein; CD79b
Target/Specificity	KLH-conjugated synthetic peptide encompassing a sequence within the center region of human CD79b. The exact sequence is proprietary.
Dilution	WB~~WB (1/500 - 1/1000)
Format	Liquid in 0.42% Potassium phosphate, 0.87% Sodium chloride, pH 7.3, 30% glycerol, and 0.09% (W/V) sodium azide.
Storage	Store at -20 °C.Stable for 12 months from date of receipt

Protein Information

Name	CD79B
Synonyms	B29, IGB
Function	Required in cooperation with CD79A for initiation of the signal transduction cascade activated by the B-cell antigen receptor complex (BCR) which leads to internalization of the complex, trafficking to late endosomes and antigen presentation. Enhances phosphorylation of CD79A, possibly by recruiting kinases which phosphorylate CD79A or by recruiting proteins which bind to CD79A and protect it from dephosphorylation.
Cellular Location	Cell membrane; Single-pass type I membrane protein. Note=Following antigen binding, the BCR has been shown to translocate from detergent-soluble regions of the cell membrane to lipid rafts although signal

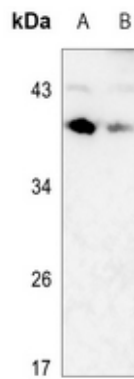
transduction through the complex can also occur outside lipid rafts.

Tissue Location B-cells.

Background

KLH-conjugated synthetic peptide encompassing a sequence within the center region of human CD79b. The exact sequence is proprietary.

Images



Western blot analysis of CD79b expression in mouse heart (A), mouse spleen (B) whole cell lysates.

Please note: All products are 'FOR RESEARCH USE ONLY. NOT FOR USE IN DIAGNOSTIC OR THERAPEUTIC PROCEDURES'.