

Anti-CCL7 Antibody

Rabbit polyclonal antibody to CCL7
Catalog # AP60237

Product Information

Application	WB
Primary Accession	P80098
Reactivity	Human, Monkey
Host	Rabbit
Clonality	Polyclonal
Calculated MW	11200

Additional Information

Gene ID	6354
Other Names	MCP3; SCYA6; SCYA7; C-C motif chemokine 7; Monocyte chemoattractant protein 3; Monocyte chemotactic protein 3; MCP-3; NC28; Small-inducible cytokine A7
Target/Specificity	KLH-conjugated synthetic peptide encompassing a sequence within the C-term region of human CCL7. The exact sequence is proprietary.
Dilution	WB~~WB (1/500 - 1/1000)
Format	Liquid in 0.42% Potassium phosphate, 0.87% Sodium chloride, pH 7.3, 30% glycerol, and 0.09% (W/V) sodium azide.
Storage	Store at -20 °C.Stable for 12 months from date of receipt

Protein Information

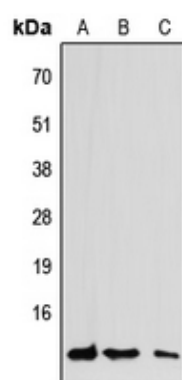
Name	CCL7
Synonyms	MCP3, SCYA6, SCYA7
Function	Chemotactic factor that attracts monocytes and eosinophils, but not neutrophils. Augments monocyte anti-tumor activity. Also induces the release of gelatinase B. This protein can bind heparin. Binds to CCR1, CCR2 and CCR3.
Cellular Location	Secreted.

Background

KLH-conjugated synthetic peptide encompassing a sequence within the C-term region of human CCL7. The

exact sequence is proprietary.

Images



Western blot analysis of CCL7 expression in H1792 (A), LOVO (B), U2OS (C) whole cell lysates.

Please note: All products are 'FOR RESEARCH USE ONLY. NOT FOR USE IN DIAGNOSTIC OR THERAPEUTIC PROCEDURES'.