

# Anti-Osteocalcin Antibody

Rabbit polyclonal antibody to Osteocalcin  
Catalog # AP60231

## Product Information

---

Application	WB
Primary Accession	<a href="#">P02818</a>
Other Accession	<a href="#">P86546</a>
Reactivity	Human, Mouse, Rat
Host	Rabbit
Clonality	Polyclonal
Calculated MW	10963

## Additional Information

---

Gene ID	632
Other Names	Osteocalcin; Bone Gla protein; BGP; Gamma-carboxyglutamic acid-containing protein
Target/Specificity	KLH-conjugated synthetic peptide encompassing a sequence within the center region of human Osteocalcin. The exact sequence is proprietary.
Dilution	WB~~WB (1/500 - 1/1000)
Format	Liquid in 0.42% Potassium phosphate, 0.87% Sodium chloride, pH 7.3, 30% glycerol, and 0.09% (W/V) sodium azide.
Storage	Store at -20 °C.Stable for 12 months from date of receipt

## Protein Information

---

Name	BGLAP
Function	Bone protein that constitutes 1-2% of the total bone protein, and which acts as a negative regulator of bone formation (PubMed: <a href="#">3019668</a> , PubMed: <a href="#">6967872</a> ). Functions to limit bone formation without impairing bone resorption or mineralization (By similarity). It binds strongly to apatite and calcium (PubMed: <a href="#">6967872</a> ).
Cellular Location	Secreted.

## Background

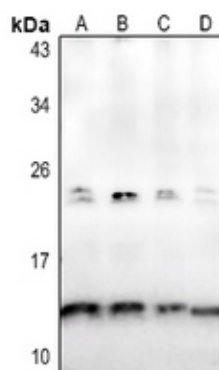
---

KLH-conjugated synthetic peptide encompassing a sequence within the center region of human Osteocalcin.

The exact sequence is proprietary.

## Images

---



Western blot analysis of Osteocalcin expression in HCT116 (A), HEK293T (B), PC12 (C), NIH3T3 (D) whole cell lysates.

Please note: All products are 'FOR RESEARCH USE ONLY. NOT FOR USE IN DIAGNOSTIC OR THERAPEUTIC PROCEDURES'.