

# Anti-Apolipoprotein L3 Antibody

Rabbit polyclonal antibody to Apolipoprotein L3

Catalog # AP60222

## Product Information

---

<b>Application</b>	WB, IHC
<b>Primary Accession</b>	<a href="#">O95236</a>
<b>Reactivity</b>	Human, Mouse, Rat
<b>Host</b>	Rabbit
<b>Clonality</b>	Polyclonal
<b>Calculated MW</b>	44278

## Additional Information

---

<b>Gene ID</b>	80833
<b>Other Names</b>	Apolipoprotein L3; Apolipoprotein L-III; ApoL-III; TNF-inducible protein CG12-1; CG12_1
<b>Target/Specificity</b>	KLH-conjugated synthetic peptide encompassing a sequence within the center region of human Apolipoprotein L3. The exact sequence is proprietary.
<b>Dilution</b>	WB~~WB (1/500 - 1/1000), IHC (1/100 - 1/200) IHC~~WB (1/500 - 1/1000), IHC (1/100 - 1/200)
<b>Format</b>	Liquid in 0.42% Potassium phosphate, 0.87% Sodium chloride, pH 7.3, 30% glycerol, and 0.09% (W/V) sodium azide.
<b>Storage</b>	Store at -20 °C.Stable for 12 months from date of receipt

## Protein Information

---

<b>Name</b>	APOL3
<b>Function</b>	May affect the movement of lipids in the cytoplasm or allow the binding of lipids to organelles.
<b>Cellular Location</b>	Cytoplasm.
<b>Tissue Location</b>	Widely expressed; the highest levels are in prostate, lung and placenta; also detected in kidney, bone marrow, spleen, thymus, spinal cord, adrenal gland, salivary gland, trachea and mammary gland; levels are low in brain, heart, fetal liver, pancreas and testis

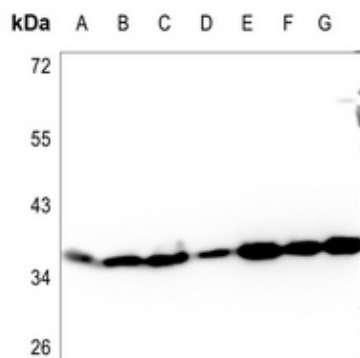
## Background

---

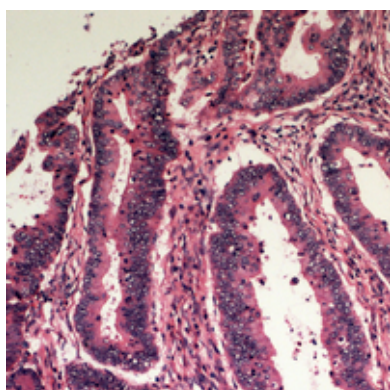
KLH-conjugated synthetic peptide encompassing a sequence within the center region of human Apolipoprotein L3. The exact sequence is proprietary.

## Images

---



Western blot analysis of Apolipoprotein L3 expression in HEK293T (A), A549 (B), H1688 (C), mouse lung (D), mouse spleen (E), rat testis (F), rat spleen (G) whole cell lysates.



Immunohistochemical analysis of Apolipoprotein L3 staining in human colon cancer formalin fixed paraffin embedded tissue section. The section was pre-treated using heat mediated antigen retrieval with sodium citrate buffer (pH 6.0). The section was then incubated with the antibody at room temperature and detected using an HRP conjugated compact polymer system. DAB was used as the chromogen. The section was then counterstained with haematoxylin and mounted with DPX.

Please note: All products are 'FOR RESEARCH USE ONLY. NOT FOR USE IN DIAGNOSTIC OR THERAPEUTIC PROCEDURES'.