

# Anti-Apolipoprotein C4 Antibody

Rabbit polyclonal antibody to Apolipoprotein C4

Catalog # AP60220

## Product Information

---

<b>Application</b>	WB
<b>Primary Accession</b>	<a href="#">P55056</a>
<b>Other Accession</b>	<a href="#">Q61268</a>
<b>Reactivity</b>	Human, Mouse, Rat
<b>Host</b>	Rabbit
<b>Clonality</b>	Polyclonal
<b>Calculated MW</b>	14553

## Additional Information

---

<b>Gene ID</b>	346
<b>Other Names</b>	Apolipoprotein C-IV; Apo-CIV; ApoC-IV; Apolipoprotein C4
<b>Target/Specificity</b>	KLH-conjugated synthetic peptide encompassing a sequence within the C-term region of human Apolipoprotein C4. The exact sequence is proprietary.
<b>Dilution</b>	WB~~WB (1/500 - 1/1000)
<b>Format</b>	Liquid in 0.42% Potassium phosphate, 0.87% Sodium chloride, pH 7.3, 30% glycerol, and 0.09% (W/V) sodium azide.
<b>Storage</b>	Store at -20 °C.Stable for 12 months from date of receipt

## Protein Information

---

<b>Name</b>	APOC4
<b>Function</b>	May participate in lipoprotein metabolism.
<b>Cellular Location</b>	Secreted.
<b>Tissue Location</b>	Expressed by the liver and secreted in plasma.

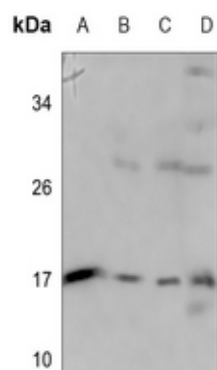
## Background

---

KLH-conjugated synthetic peptide encompassing a sequence within the C-term region of human Apolipoprotein C4. The exact sequence is proprietary.

## Images

---



Western blot analysis of Apolipoprotein C4 expression in HEK293T (A), HepG2 (B), Jurkat (C), rat liver (D) whole cell lysates.

Please note: All products are 'FOR RESEARCH USE ONLY. NOT FOR USE IN DIAGNOSTIC OR THERAPEUTIC PROCEDURES'.