

# Anti-Annexin A7 Antibody

Rabbit polyclonal antibody to Annexin A7  
Catalog # AP60219

## Product Information

---

<b>Application</b>	WB
<b>Primary Accession</b>	<a href="#">P20073</a>
<b>Other Accession</b>	<a href="#">Q07076</a>
<b>Reactivity</b>	Human, Mouse, Rabbit, Monkey, Pig, Bovine
<b>Host</b>	Rabbit
<b>Clonality</b>	Polyclonal
<b>Calculated MW</b>	52739

## Additional Information

---

<b>Gene ID</b>	310
<b>Other Names</b>	ANX7; SNX; Annexin A7; Annexin VII; Annexin-7; Synexin
<b>Target/Specificity</b>	KLH-conjugated synthetic peptide encompassing a sequence within the center region of human Annexin A7. The exact sequence is proprietary.
<b>Dilution</b>	WB--WB (1/500 - 1/1000)
<b>Format</b>	Liquid in 0.42% Potassium phosphate, 0.87% Sodium chloride, pH 7.3, 30% glycerol, and 0.09% (W/V) sodium azide.
<b>Storage</b>	Store at -20 °C. Stable for 12 months from date of receipt

## Protein Information

---

<b>Name</b>	ANXA7
<b>Synonyms</b>	ANX7, SNX
<b>Function</b>	Calcium/phospholipid-binding protein which promotes membrane fusion and is involved in exocytosis.
<b>Tissue Location</b>	Isoform 1 is expressed in brain, heart and skeletal muscle. Isoform 2 is more abundant in liver, lung, kidney, spleen, fibroblasts and placenta.

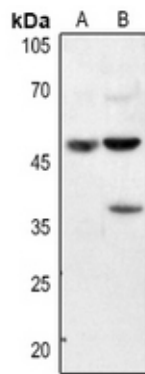
## Background

---

KLH-conjugated synthetic peptide encompassing a sequence within the center region of human Annexin A7. The exact sequence is proprietary.

## Images

---



Western blot analysis of Annexin A7 expression in HEK293T (A), HeLa (B) whole cell lysates.

Please note: All products are 'FOR RESEARCH USE ONLY. NOT FOR USE IN DIAGNOSTIC OR THERAPEUTIC PROCEDURES'.