

Anti-Amphiphysin 1 Antibody

Rabbit polyclonal antibody to Amphiphysin 1
Catalog # AP60218

Product Information

| | |
|--------------------------|-----------------------------------|
| Application | WB |
| Primary Accession | P49418 |
| Other Accession | Q7TQF7 |
| Reactivity | Human, Mouse, Rat, Monkey, Bovine |
| Host | Rabbit |
| Clonality | Polyclonal |
| Calculated MW | 76257 |

Additional Information

| | |
|---------------------------|--|
| Gene ID | 273 |
| Other Names | AMPH1; Amphiphysin |
| Target/Specificity | KLH-conjugated synthetic peptide encompassing a sequence within the center region of human Amphiphysin 1. The exact sequence is proprietary. |
| Dilution | WB~~WB (1/500 - 1/1000) |
| Format | Liquid in 0.42% Potassium phosphate, 0.87% Sodium chloride, pH 7.3, 30% glycerol, and 0.09% (W/V) sodium azide. |
| Storage | Store at -20 °C. Stable for 12 months from date of receipt |

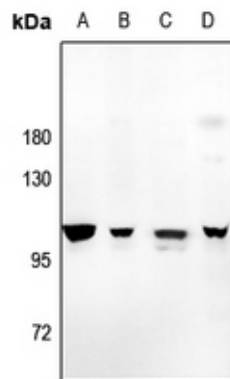
Protein Information

| | |
|--------------------------|---|
| Name | AMPH |
| Synonyms | AMPH1 |
| Function | May participate in mechanisms of regulated exocytosis in synapses and certain endocrine cell types. May control the properties of the membrane associated cytoskeleton. |
| Cellular Location | Cytoplasmic vesicle, secretory vesicle, synaptic vesicle membrane; Peripheral membrane protein; Cytoplasmic side Cytoplasm, cytoskeleton |
| Tissue Location | Neurons, certain endocrine cell types and spermatocytes |

Background

KLH-conjugated synthetic peptide encompassing a sequence within the center region of human Amphiphysin 1. The exact sequence is proprietary.

Images



Western blot analysis of Amphiphysin 1 expression in U87MG (A), Panc1 (B), SHSY5Y (C), BV2 (D) whole cell lysates.

Please note: All products are 'FOR RESEARCH USE ONLY. NOT FOR USE IN DIAGNOSTIC OR THERAPEUTIC PROCEDURES'.