

Anti-ALDOC Antibody

Rabbit polyclonal antibody to ALDOC
Catalog # AP60217

Product Information

Application	WB, IHC
Primary Accession	P09972
Other Accession	P05063
Reactivity	Human, Mouse, Rat, Rabbit, Monkey, Pig, Drosophila
Host	Rabbit
Clonality	Polyclonal
Calculated MW	39456

Additional Information

Gene ID	230
Other Names	ALDC; Fructose-bisphosphate aldolase C; Brain-type aldolase
Target/Specificity	KLH-conjugated synthetic peptide encompassing a sequence within the center region of human ALDOC. The exact sequence is proprietary.
Dilution	WB~~WB (1/500 - 1/1000), IHC (1/100 - 1/200) IHC~~WB (1/500 - 1/1000), IHC (1/100 - 1/200)
Format	Liquid in 0.42% Potassium phosphate, 0.87% Sodium chloride, pH 7.3, 30% glycerol, and 0.09% (W/V) sodium azide.
Storage	Store at -20 °C.Stable for 12 months from date of receipt

Protein Information

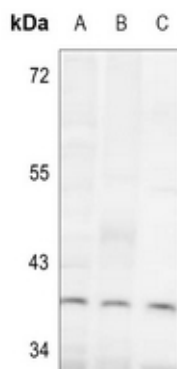
Name	ALDOC
Synonyms	ALDC

Background

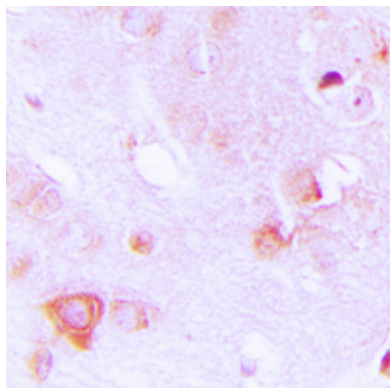
KLH-conjugated synthetic peptide encompassing a sequence within the center region of human ALDOC. The exact sequence is proprietary.

Images

Western blot analysis of ALDOC expression in K562 (A),



mouse testis (B), rat brain (C) whole cell lysates.



Immunohistochemical analysis of ALDOC staining in human brain formalin fixed paraffin embedded tissue section. The section was pre-treated using heat mediated antigen retrieval with sodium citrate buffer (pH 6.0). The section was then incubated with the antibody at room temperature and detected using an HRP conjugated compact polymer system. DAB was used as the chromogen. The section was then counterstained with haematoxylin and mounted with DPX.

Please note: All products are 'FOR RESEARCH USE ONLY. NOT FOR USE IN DIAGNOSTIC OR THERAPEUTIC PROCEDURES'.