

Anti-ADAMTS10 Antibody

Rabbit polyclonal antibody to ADAMTS10

Catalog # AP60213

Product Information

Application	WB
Primary Accession	Q9H324
Other Accession	P58459
Reactivity	Human, Mouse, Rat, Monkey, Pig
Host	Rabbit
Clonality	Polyclonal
Calculated MW	120874

Additional Information

Gene ID	81794
Other Names	A disintegrin and metalloproteinase with thrombospondin motifs 10; ADAM-TS 10; ADAM-TS10; ADAMTS-10
Target/Specificity	KLH-conjugated synthetic peptide encompassing a sequence within the center region of human ADAMTS10. The exact sequence is proprietary.
Dilution	WB~~WB (1/500 - 1/1000)
Format	Liquid in 0.42% Potassium phosphate, 0.87% Sodium chloride, pH 7.3, 30% glycerol, and 0.09% (W/V) sodium azide.
Storage	Store at -20 °C.Stable for 12 months from date of receipt

Protein Information

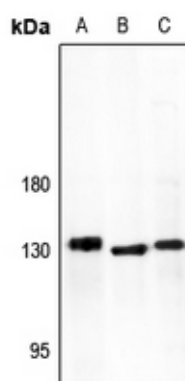
Name	ADAMTS10
Function	Metalloprotease that participate in microfibrils assembly. Microfibrils are extracellular matrix components occurring independently or along with elastin in the formation of elastic tissues.
Cellular Location	Secreted, extracellular space, extracellular matrix
Tissue Location	Widely expressed in adult tissues.

Background

KLH-conjugated synthetic peptide encompassing a sequence within the center region of human ADAMTS10.

The exact sequence is proprietary.

Images



Western blot analysis of ADAMTS10 expression in U87MG (A), H9C2 (B), CT26 (C) whole cell lysates.

Please note: All products are 'FOR RESEARCH USE ONLY. NOT FOR USE IN DIAGNOSTIC OR THERAPEUTIC PROCEDURES'.