

Anti-Orosomucoid 1 Antibody

Rabbit polyclonal antibody to Orosomucoid 1
Catalog # AP60196

Product Information

| | |
|--------------------------|------------------------|
| Application | WB |
| Primary Accession | P02763 |
| Other Accession | Q60590 |
| Reactivity | Human, Mouse, Rat |
| Host | Rabbit |
| Clonality | Polyclonal |
| Calculated MW | 23540 |

Additional Information

| | |
|---------------------------|--|
| Gene ID | 5004 |
| Other Names | AGP1; Alpha-1-acid glycoprotein 1; AGP 1; Orosomucoid-1; OMD 1 |
| Target/Specificity | KLH-conjugated synthetic peptide encompassing a sequence within the center region of human Orosomucoid 1. The exact sequence is proprietary. |
| Dilution | WB~~WB (1/500 - 1/1000) |
| Format | Liquid in 0.42% Potassium phosphate, 0.87% Sodium chloride, pH 7.3, 30% glycerol, and 0.09% (W/V) sodium azide. |
| Storage | Store at -20 °C.Stable for 12 months from date of receipt |

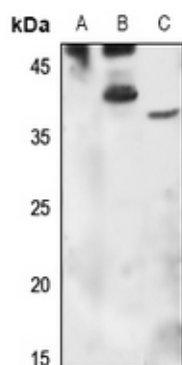
Protein Information

| | |
|--------------------------|--|
| Name | ORM1 |
| Synonyms | AGP1 |
| Function | Functions as a transport protein in the blood stream. Binds various ligands in the interior of its beta-barrel domain. Also binds synthetic drugs and influences their distribution and availability in the body. Appears to function in modulating the activity of the immune system during the acute-phase reaction. |
| Cellular Location | Secreted. |
| Tissue Location | Expressed by the liver and secreted in plasma. |

Background

KLH-conjugated synthetic peptide encompassing a sequence within the center region of human Orosomucoid 1. The exact sequence is proprietary.

Images



Western blot analysis of Orosomucoid 1 expression in K562 (A), mouse liver (B), rat liver (C) whole cell lysates.

Please note: All products are 'FOR RESEARCH USE ONLY. NOT FOR USE IN DIAGNOSTIC OR THERAPEUTIC PROCEDURES'.