

# Anti-Enterokinase LC Antibody

Rabbit polyclonal antibody to Enterokinase LC  
Catalog # AP60164

## Product Information

---

Application	WB
Primary Accession	<a href="#">P98073</a>
Other Accession	<a href="#">P97435</a>
Reactivity	Human, Mouse, Rat
Host	Rabbit
Clonality	Polyclonal
Calculated MW	112935

## Additional Information

---

Gene ID	5651
Other Names	ENTK; PRSS7; Enteropeptidase; Enterokinase; Serine protease 7; Transmembrane protease serine 15
Target/Specificity	KLH-conjugated synthetic peptide encompassing a sequence within the C-term region of human Enterokinase LC. The exact sequence is proprietary.
Dilution	WB~~WB (1/500 - 1/1000)
Format	Liquid in 0.42% Potassium phosphate, 0.87% Sodium chloride, pH 7.3, 30% glycerol, and 0.09% (W/V) sodium azide.
Storage	Store at -20 °C.Stable for 12 months from date of receipt

## Protein Information

---

Name	TMPRSS15
Synonyms	ENTK, PRSS7
Function	Responsible for initiating activation of pancreatic proteolytic proenzymes (trypsin, chymotrypsin and carboxypeptidase A). It catalyzes the conversion of trypsinogen to trypsin which in turn activates other proenzymes including chymotrypsinogen, procarboxypeptidases, and proelastases.
Cellular Location	Membrane; Single-pass type II membrane protein
Tissue Location	Intestinal brush border.

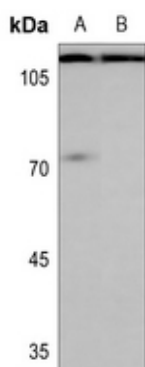
## Background

---

KLH-conjugated synthetic peptide encompassing a sequence within the C-term region of human Enterokinase LC. The exact sequence is proprietary.

## Images

---



Western blot analysis of Enterokinase LC expression in mouse testis (A), rat testis (B) whole cell lysates.

Please note: All products are 'FOR RESEARCH USE ONLY. NOT FOR USE IN DIAGNOSTIC OR THERAPEUTIC PROCEDURES'.