

Anti-CD269 Antibody

Rabbit polyclonal antibody to CD269
Catalog # AP60153

Product Information

Application	WB
Primary Accession	Q02223
Other Accession	O88472
Reactivity	Human, Mouse, Rat
Host	Rabbit
Clonality	Polyclonal

Additional Information

Other Names	BCM; BCMA; Tumor necrosis factor receptor superfamily member 17; B-cell maturation protein; CD269
Target/Specificity	KLH-conjugated synthetic peptide encompassing a sequence within the center region of human CD269. The exact sequence is proprietary.
Dilution	WB~~WB (1/500 - 1/1000)
Format	Liquid in 0.42% Potassium phosphate, 0.87% Sodium chloride, pH 7.3, 30% glycerol, and 0.09% (W/V) sodium azide.
Storage	Store at -20 °C. Stable for 12 months from date of receipt

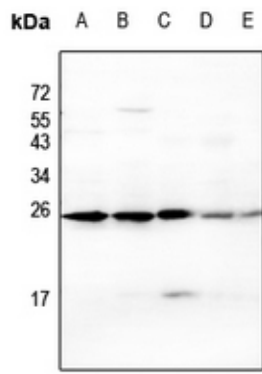
Protein Information

Background

KLH-conjugated synthetic peptide encompassing a sequence within the center region of human CD269. The exact sequence is proprietary.

Images

Western blot analysis of CD269 expression in HEK293T (A), U87MG (B), mouse spleen (C), PC12 (D), HepG2 (E) whole cell lysates.



Please note: All products are 'FOR RESEARCH USE ONLY. NOT FOR USE IN DIAGNOSTIC OR THERAPEUTIC PROCEDURES'.