

Anti-CD224 HC Antibody

Rabbit polyclonal antibody to CD224 HC
Catalog # AP60152

Product Information

Application	WB
Primary Accession	P19440
Other Accession	Q60928
Reactivity	Human, Mouse, Rat
Host	Rabbit
Clonality	Polyclonal

Additional Information

Other Names	GGT; Gamma-glutamyltranspeptidase 1; GGT 1; Gamma-glutamyltransferase 1; Glutathione hydrolase 1; Leukotriene-C4 hydrolase; CD224
Target/Specificity	KLH-conjugated synthetic peptide encompassing a sequence within the center region of human CD224 HC. The exact sequence is proprietary.
Dilution	WB~~WB (1/500 - 1/1000)
Format	Liquid in 0.42% Potassium phosphate, 0.87% Sodium chloride, pH 7.3, 30% glycerol, and 0.09% (W/V) sodium azide.
Storage	Store at -20 °C. Stable for 12 months from date of receipt

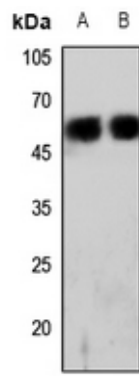
Protein Information

Background

KLH-conjugated synthetic peptide encompassing a sequence within the center region of human CD224 HC. The exact sequence is proprietary.

Images

Western blot analysis of CD224 HC expression in HEK293T (A), rat kidney (B) whole cell lysates.



Please note: All products are 'FOR RESEARCH USE ONLY. NOT FOR USE IN DIAGNOSTIC OR THERAPEUTIC PROCEDURES'.