

# Anti-CD156a Antibody

Rabbit polyclonal antibody to CD156a

Catalog # AP60151

## Product Information

---

<b>Application</b>	WB
<b>Primary Accession</b>	<a href="#">P78325</a>
<b>Other Accession</b>	<a href="#">Q05910</a>
<b>Reactivity</b>	Human, Mouse, Rat
<b>Host</b>	Rabbit
<b>Clonality</b>	Polyclonal
<b>Calculated MW</b>	88771

## Additional Information

---

<b>Gene ID</b>	101
<b>Other Names</b>	MS2; Disintegrin and metalloproteinase domain-containing protein 8; ADAM 8; Cell surface antigen MS2; CD156a
<b>Target/Specificity</b>	KLH-conjugated synthetic peptide encompassing a sequence within the center region of human CD156a. The exact sequence is proprietary.
<b>Dilution</b>	WB~~WB (1/500 - 1/1000)
<b>Format</b>	Liquid in 0.42% Potassium phosphate, 0.87% Sodium chloride, pH 7.3, 30% glycerol, and 0.09% (W/V) sodium azide.
<b>Storage</b>	Store at -20 °C.Stable for 12 months from date of receipt

## Protein Information

---

<b>Name</b>	ADAM8
<b>Synonyms</b>	MS2
<b>Function</b>	Possible involvement in extravasation of leukocytes.
<b>Cellular Location</b>	Membrane; Single-pass type I membrane protein.
<b>Tissue Location</b>	Expressed on neutrophils and monocytes.

## Background

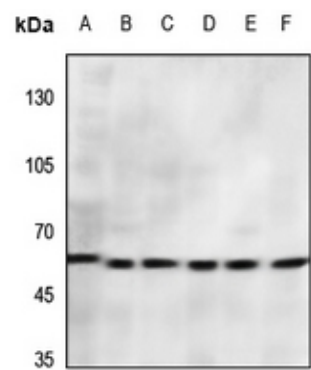
---

KLH-conjugated synthetic peptide encompassing a sequence within the center region of human CD156a. The

exact sequence is proprietary.

## Images

---



Western blot analysis of CD156a expression in mouse lung (A), mouse brain (B), rat spleen (C), rat lung (D), rat brain (E), rat spleen (F) whole cell lysates.

Please note: All products are 'FOR RESEARCH USE ONLY. NOT FOR USE IN DIAGNOSTIC OR THERAPEUTIC PROCEDURES'.