

Anti-Cathepsin C LC Antibody

Rabbit polyclonal antibody to Cathepsin C LC

Catalog # AP60147

Product Information

Application	WB
Primary Accession	P53634
Other Accession	P97821
Reactivity	Human, Mouse, Rat, Bovine, Drosophila
Host	Rabbit
Clonality	Polyclonal
Calculated MW	51854

Additional Information

Gene ID	1075
Other Names	CPPI; Dipeptidyl peptidase 1; Cathepsin C; Cathepsin J; Dipeptidyl peptidase I; DPP-I; DPPI; Dipeptidyl transferase
Target/Specificity	KLH-conjugated synthetic peptide encompassing a sequence within the C-term region of human Cathepsin C LC. The exact sequence is proprietary.
Dilution	WB~~WB (1/500 - 1/1000)
Format	Liquid in 0.42% Potassium phosphate, 0.87% Sodium chloride, pH 7.3, 30% glycerol, and 0.09% (W/V) sodium azide.
Storage	Store at -20 °C.Stable for 12 months from date of receipt

Protein Information

Name	CTSC
Synonyms	CPPI
Function	Thiol protease (PubMed: 1586157). Has dipeptidylpeptidase activity (PubMed: 1586157). Active against a broad range of dipeptide substrates composed of both polar and hydrophobic amino acids (PubMed: 1586157). Proline cannot occupy the P1 position and arginine cannot occupy the P2 position of the substrate (PubMed: 1586157). Can act as both an exopeptidase and endopeptidase (PubMed: 1586157). Activates serine proteases such as elastase, cathepsin G and granzymes A and B (PubMed: 8428921).
Cellular Location	Lysosome. Ubiquitous. Highly expressed in lung, kidney and placenta. Detected at

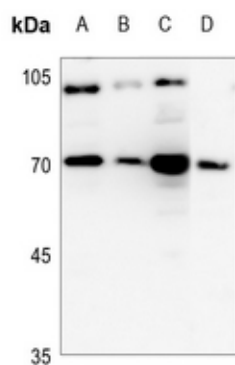
Tissue Location

intermediate levels in colon, small intestine, spleen and pancreas.

Background

KLH-conjugated synthetic peptide encompassing a sequence within the C-term region of human Cathepsin C LC. The exact sequence is proprietary.

Images



Western blot analysis of Cathepsin C LC expression in Hela (A), H466 (B), mouse lung (C), rat lung (D) whole cell lysates.

Please note: All products are 'FOR RESEARCH USE ONLY. NOT FOR USE IN DIAGNOSTIC OR THERAPEUTIC PROCEDURES'.