

# Anti-Cathepsin A 20k Antibody

Rabbit polyclonal antibody to Cathepsin A 20k  
Catalog # AP60146

## Product Information

---

<b>Application</b>	WB
<b>Primary Accession</b>	<a href="#">P10619</a>
<b>Other Accession</b>	<a href="#">P16675</a>
<b>Reactivity</b>	Human, Mouse, Rat, Rabbit, Monkey, Drosophila
<b>Host</b>	Rabbit
<b>Clonality</b>	Polyclonal
<b>Calculated MW</b>	54466

## Additional Information

---

<b>Gene ID</b>	5476
<b>Other Names</b>	PPGB; Lysosomal protective protein; Carboxypeptidase C; Carboxypeptidase L; Cathepsin A; Protective protein cathepsin A; PPCA; Protective protein for beta-galactosidase
<b>Target/Specificity</b>	KLH-conjugated synthetic peptide encompassing a sequence within the center region of human Cathepsin A 20k. The exact sequence is proprietary.
<b>Dilution</b>	WB--WB (1/500 - 1/1000)
<b>Format</b>	Liquid in 0.42% Potassium phosphate, 0.87% Sodium chloride, pH 7.3, 30% glycerol, and 0.09% (W/V) sodium azide.
<b>Storage</b>	Store at -20 °C. Stable for 12 months from date of receipt

## Protein Information

---

<b>Name</b>	CTSA
<b>Synonyms</b>	PPGB
<b>Function</b>	Protective protein appears to be essential for both the activity of beta-galactosidase and neuraminidase, it associates with these enzymes and exerts a protective function necessary for their stability and activity. This protein is also a carboxypeptidase and can deamidate tachykinins.
<b>Cellular Location</b>	Lysosome.

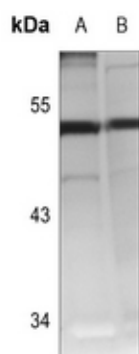
## Background

---

KLH-conjugated synthetic peptide encompassing a sequence within the center region of human Cathepsin A 20k. The exact sequence is proprietary.

## Images

---



Western blot analysis of Cathepsin A 20k expression in rat liver (A), mouse kidney (B) whole cell lysates.

Please note: All products are 'FOR RESEARCH USE ONLY. NOT FOR USE IN DIAGNOSTIC OR THERAPEUTIC PROCEDURES'.