

Anti-CAPNS2 Antibody

Rabbit polyclonal antibody to CAPNS2

Catalog # AP60145

Product Information

Application	WB
Primary Accession	Q96L46
Other Accession	Q9D7J7
Reactivity	Human, Mouse, Rat
Host	Rabbit
Clonality	Polyclonal
Calculated MW	27660

Additional Information

Gene ID	84290
Other Names	Calpain small subunit 2; CSS2; Calcium-dependent protease small subunit 2
Target/Specificity	KLH-conjugated synthetic peptide encompassing a sequence within the C-term region of human CAPNS2. The exact sequence is proprietary.
Dilution	WB~~WB (1/500 - 1/1000)
Format	Liquid in 0.42% Potassium phosphate, 0.87% Sodium chloride, pH 7.3, 30% glycerol, and 0.09% (W/V) sodium azide.
Storage	Store at -20 °C.Stable for 12 months from date of receipt

Protein Information

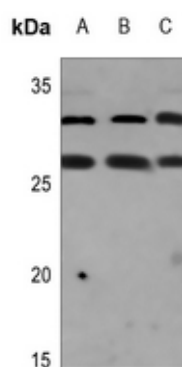
Name	CAPNS2
Function	Calcium-regulated non-lysosomal thiol-protease which catalyzes limited proteolysis of substrates involved in cytoskeletal remodeling and signal transduction. This small subunit may act as a tissue-specific chaperone of the large subunit, possibly by helping it fold into its correct conformation for activity.
Cellular Location	Cytoplasm. Cell membrane. Note=Translocates to the plasma membrane upon calcium binding.

Background

KLH-conjugated synthetic peptide encompassing a sequence within the C-term region of human CAPNS2.

The exact sequence is proprietary.

Images



Western blot analysis of CAPNS2 expression in HEK293T (A), A549 (B), H1792 (C) whole cell lysates.

Please note: All products are 'FOR RESEARCH USE ONLY. NOT FOR USE IN DIAGNOSTIC OR THERAPEUTIC PROCEDURES'.