

Anti-ACSL6 Antibody

Rabbit polyclonal antibody to ACSL6

Catalog # AP60096

Product Information

Application	WB, IHC
Primary Accession	Q9UKU0
Other Accession	Q91WC3
Reactivity	Human, Mouse, Rat
Host	Rabbit
Clonality	Polyclonal
Calculated MW	77752

Additional Information

Gene ID	23305
Other Names	ACS2; FACL6; KIAA0837; LACS5; Long-chain-fatty-acid--CoA ligase 6; Long-chain acyl-CoA synthetase 6; LACS 6
Target/Specificity	KLH-conjugated synthetic peptide encompassing a sequence within the center region of human ACSL6. The exact sequence is proprietary.
Dilution	WB~~WB (1/500 - 1/1000), IHC (1/100 - 1/200) IHC~~WB (1/500 - 1/1000), IHC (1/100 - 1/200)
Format	Liquid in 0.42% Potassium phosphate, 0.87% Sodium chloride, pH 7.3, 30% glycerol, and 0.09% (W/V) sodium azide.
Storage	Store at -20 °C.Stable for 12 months from date of receipt

Protein Information

Name	ACSL6 (HGNC:16496)
Function	Catalyzes the conversion of long-chain fatty acids to their active form acyl-CoA for both synthesis of cellular lipids, and degradation via beta-oxidation (PubMed: 22633490 , PubMed: 24269233). Plays an important role in fatty acid metabolism in brain and the acyl- CoAs produced may be utilized exclusively for the synthesis of the brain lipid.
Cellular Location	Mitochondrion outer membrane; Single-pass type III membrane protein. Peroxisome membrane; Single-pass type III membrane protein. Microsome membrane; Single-pass type III membrane protein. Endoplasmic reticulum membrane; Single-pass type III membrane protein Expressed predominantly in erythrocyte precursors, in particular in

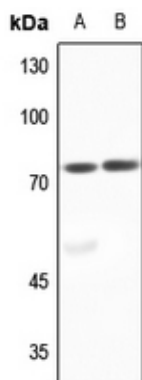
Tissue Location

reticulocytes, fetal blood cells derived from fetal liver, hemopoietic stem cells from cord blood, bone marrow and brain

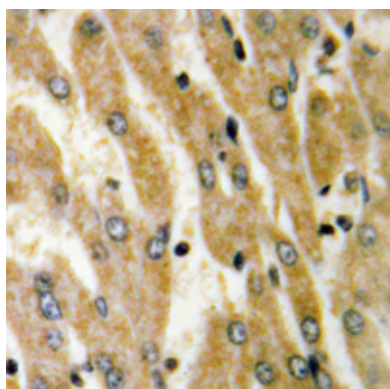
Background

KLH-conjugated synthetic peptide encompassing a sequence within the center region of human ACSL6. The exact sequence is proprietary.

Images



Western blot analysis of ACSL6 expression in rat brain (A), rat testis (B) whole cell lysates.



Immunohistochemical analysis of ACSL6 staining in human liver cancer formalin fixed paraffin embedded tissue section. The section was pre-treated using heat mediated antigen retrieval with sodium citrate buffer (pH 6.0). The section was then incubated with the antibody at room temperature and detected using an HRP conjugated compact polymer system. DAB was used as the chromogen. The section was then counterstained with haematoxylin and mounted with DPX.

Please note: All products are 'FOR RESEARCH USE ONLY. NOT FOR USE IN DIAGNOSTIC OR THERAPEUTIC PROCEDURES'.