

Anti-TESK2 Antibody

Rabbit polyclonal antibody to TESK2

Catalog # AP60083

Product Information

Application	WB, IP
Primary Accession	Q96S53
Other Accession	Q8VCT9
Reactivity	Human, Mouse, Rat, Zebrafish
Host	Rabbit
Clonality	Polyclonal
Calculated MW	63639

Additional Information

Gene ID	10420
Other Names	Dual specificity testis-specific protein kinase 2; Testicular protein kinase 2
Target/Specificity	KLH-conjugated synthetic peptide encompassing a sequence within the center region of human TESK2. The exact sequence is proprietary.
Dilution	WB~~WB (1/500 - 1/1000), IP (1/10 - 1/100) IP~~N/A
Format	Liquid in 0.42% Potassium phosphate, 0.87% Sodium chloride, pH 7.3, 30% glycerol, and 0.09% (W/V) sodium azide.
Storage	Store at -20 °C.Stable for 12 months from date of receipt

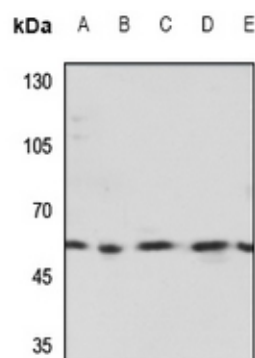
Protein Information

Name	TESK2
Function	Dual specificity protein kinase activity catalyzing autophosphorylation and phosphorylation of exogenous substrates on both serine/threonine and tyrosine residues. Phosphorylates cofilin at 'Ser- 3'. May play an important role in spermatogenesis.
Cellular Location	Nucleus.
Tissue Location	Predominantly expressed in testis and prostate. Found predominantly in non-germinal Sertoli cells

Background

KLH-conjugated synthetic peptide encompassing a sequence within the center region of human TESK2. The exact sequence is proprietary.

Images



Western blot analysis of TESK2 expression in HEK293T (A), Hela (B), mouse kidney (C), rat kidney (D), rat spleen (E) whole cell lysates.

Please note: All products are 'FOR RESEARCH USE ONLY. NOT FOR USE IN DIAGNOSTIC OR THERAPEUTIC PROCEDURES'.