

Anti-ZEB2 Antibody

Rabbit polyclonal antibody to ZEB2
Catalog # AP60078

Product Information

Application	WB, IHC
Primary Accession	O60315
Reactivity	Human, Rat, Rabbit, Monkey
Host	Rabbit
Clonality	Polyclonal
Calculated MW	136447

Additional Information

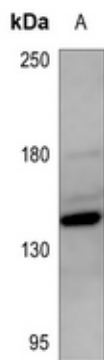
Gene ID	9839
Other Names	KIAA0569; SIP1; ZFHX1B; ZFX1B; Zinc finger E-box-binding homeobox 2; Smad-interacting protein 1; SMADIP1; Zinc finger homeobox protein 1b
Target/Specificity	KLH-conjugated synthetic peptide encompassing a sequence within the N-term region of human ZEB2. The exact sequence is proprietary.
Dilution	WB~~WB (1/500 - 1/1000), IHC (1/100 - 1/200) IHC~~WB (1/500 - 1/1000), IHC (1/100 - 1/200)
Format	Liquid in 0.42% Potassium phosphate, 0.87% Sodium chloride, pH 7.3, 30% glycerol, and 0.09% (W/V) sodium azide.
Storage	Store at -20 °C.Stable for 12 months from date of receipt

Protein Information

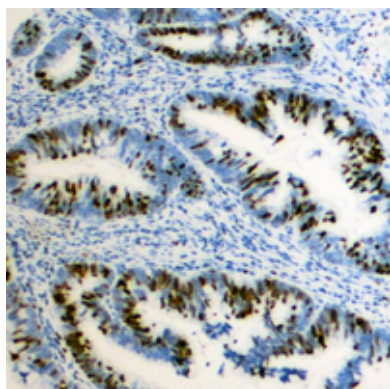
Name	ZEB2 (HGNC:14881)
Function	Transcriptional inhibitor that binds to DNA sequence 5'- CACCT-3' in different promoters (PubMed: 16061479 , PubMed: 20516212). Represses transcription of E-cadherin (PubMed: 16061479). Represses expression of MEOX2 (PubMed: 20516212).
Cellular Location	Nucleus. Chromosome

Background

KLH-conjugated synthetic peptide encompassing a sequence within the N-term region of human ZEB2. The exact sequence is proprietary.



Western blot analysis of ZEB2 expression in mouse liver (A) whole cell lysates.



Immunohistochemical analysis of ZEB2 staining in human colon cancer formalin fixed paraffin embedded tissue section. The section was pre-treated using heat mediated antigen retrieval with sodium citrate buffer (pH 6.0). The section was then incubated with the antibody at room temperature and detected using an HRP conjugated compact polymer system. DAB was used as the chromogen. The section was then counterstained with haematoxylin and mounted with DPX.

Please note: All products are 'FOR RESEARCH USE ONLY. NOT FOR USE IN DIAGNOSTIC OR THERAPEUTIC PROCEDURES'.