

# Anti-CD90 Antibody

Rabbit polyclonal antibody to CD90

Catalog # AP60062

## Product Information

---

|                          |                        |
|--------------------------|------------------------|
| <b>Application</b>       | WB                     |
| <b>Primary Accession</b> | <a href="#">P04216</a> |
| <b>Reactivity</b>        | Human                  |
| <b>Host</b>              | Rabbit                 |
| <b>Clonality</b>         | Polyclonal             |
| <b>Calculated MW</b>     | 17935                  |

## Additional Information

---

|                           |   |
|---------------------------|---|
| <b>Gene ID</b>            | 7070  |
| <b>Other Names</b>        | Thy-1 membrane glycoprotein; CDw90; Thy-1 antigen; CD90   |
| <b>Target/Specificity</b> | KLH-conjugated synthetic peptide encompassing a sequence within the center region of human CD90. The exact sequence is proprietary. |
| <b>Dilution</b>           | WB~~WB (1/500 - 1/1000)   |
| <b>Format</b>             | Liquid in 0.42% Potassium phosphate, 0.87% Sodium chloride, pH 7.3, 30% glycerol, and 0.09% (W/V) sodium azide.                     |
| <b>Storage</b>            | Store at -20 °C.Stable for 12 months from date of receipt   |

## Protein Information

---

|                          |   |
|--------------------------|---|
| <b>Name</b>              | THY1  |
| <b>Function</b>          | May play a role in cell-cell or cell-ligand interactions during synaptogenesis and other events in the brain. |
| <b>Cellular Location</b> | Cell membrane; Lipid-anchor, GPI- anchor  |

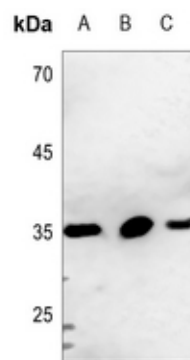
## Background

---

KLH-conjugated synthetic peptide encompassing a sequence within the center region of human CD90. The exact sequence is proprietary.

## Images

---



Western blot analysis of CD90 expression in HEK293T (A), K562 (B), A549 (C) whole cell lysates.

Please note: All products are 'FOR RESEARCH USE ONLY. NOT FOR USE IN DIAGNOSTIC OR THERAPEUTIC PROCEDURES'.