

Anti-SRSF7 Antibody

Rabbit polyclonal antibody to SRSF7

Catalog # AP60049

Product Information

Application	WB, IHC
Primary Accession	Q16629
Other Accession	Q8BL97
Reactivity	Human, Mouse, Rat, Bovine
Host	Rabbit
Clonality	Polyclonal
Calculated MW	27367

Additional Information

Gene ID	6432
Other Names	SFRS7; Serine/arginine-rich splicing factor 7; Splicing factor 9G8; Splicing factor, arginine/serine-rich 7
Target/Specificity	KLH-conjugated synthetic peptide encompassing a sequence within the center region of human SRSF7. The exact sequence is proprietary.
Dilution	WB~~WB (1/500 - 1/1000), IHC (1/100 - 1/200) IHC~~WB (1/500 - 1/1000), IHC (1/100 - 1/200)
Format	Liquid in 0.42% Potassium phosphate, 0.87% Sodium chloride, pH 7.3, 30% glycerol, and 0.09% (W/V) sodium azide.
Storage	Store at -20 °C.Stable for 12 months from date of receipt

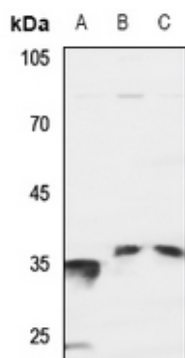
Protein Information

Name	SRSF7
Synonyms	SFRS7
Function	Required for pre-mRNA splicing. Can also modulate alternative splicing in vitro. Represses the splicing of MAPT/Tau exon 10. May function as export adapter involved in mRNA nuclear export such as of histone H2A. Binds mRNA which is thought to be transferred to the NXF1- NXT1 heterodimer for export (TAP/NXF1 pathway); enhances NXF1-NXT1 RNA- binding activity. RNA-binding is semi-sequence specific.
Cellular Location	Nucleus. Cytoplasm Brain, liver, kidney and lung.

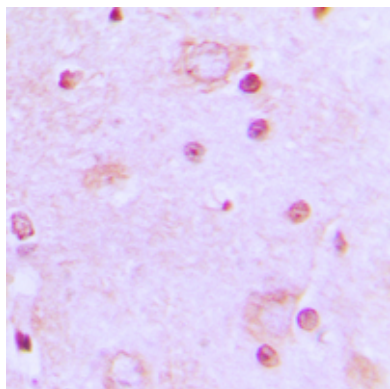
Background

KLH-conjugated synthetic peptide encompassing a sequence within the center region of human SRSF7. The exact sequence is proprietary.

Images



Western blot analysis of SRSF7 expression in HEK293T (A), HeLa (B), H446 (C) whole cell lysates.



Immunohistochemical analysis of SRSF7 staining in human brain formalin fixed paraffin embedded tissue section. The section was pre-treated using heat mediated antigen retrieval with sodium citrate buffer (pH 6.0). The section was then incubated with the antibody at room temperature and detected using an HRP conjugated compact polymer system. DAB was used as the chromogen. The section was then counterstained with haematoxylin and mounted with DPX.

Please note: All products are 'FOR RESEARCH USE ONLY. NOT FOR USE IN DIAGNOSTIC OR THERAPEUTIC PROCEDURES'.