

Anti-MEKK3 Antibody

Rabbit polyclonal antibody to MEKK3

Catalog # AP60029

Product Information

Application	WB, IF/IC, IHC
Primary Accession	Q99759
Other Accession	Q61084
Reactivity	Human, Mouse, Rat
Host	Rabbit
Clonality	Polyclonal
Calculated MW	70898

Additional Information

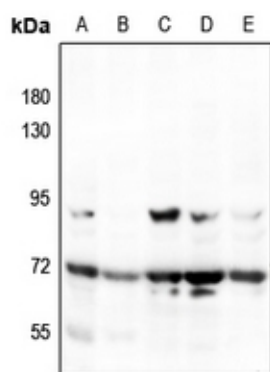
Gene ID	4215
Other Names	MAPKKK3; MEKK3; Mitogen-activated protein kinase kinase kinase 3; MAPK/ERK kinase kinase 3; MEK kinase 3; MEKK 3
Target/Specificity	KLH-conjugated synthetic peptide encompassing a sequence within the center region of human MEKK3. The exact sequence is proprietary.
Dilution	WB~~WB (1/500 - 1/1000), IHC (1/100 - 1/200), IF/IC (1/100 - 1/500) IF/IC~~N/A IHC~~WB (1/500 - 1/1000), IHC (1/100 - 1/200), IF/IC (1/100 - 1/500)
Format	Liquid in 0.42% Potassium phosphate, 0.87% Sodium chloride, pH 7.3, 30% glycerol, and 0.09% (W/V) sodium azide.
Storage	Store at -20 °C.Stable for 12 months from date of receipt

Protein Information

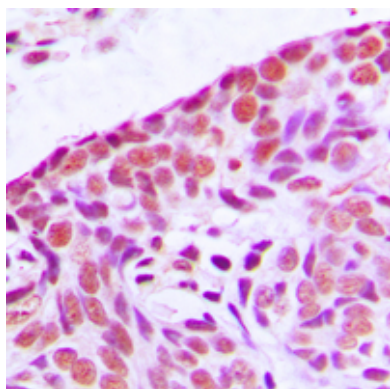
Name	MAP3K3
Synonyms	MAPKKK3, MEKK3
Function	Component of a protein kinase signal transduction cascade. Mediates activation of the NF-kappa-B, AP1 and DDIT3 transcriptional regulators.

Background

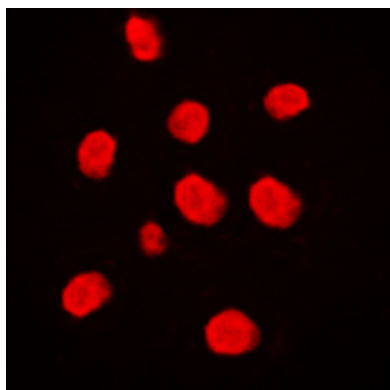
KLH-conjugated synthetic peptide encompassing a sequence within the center region of human MEKK3. The exact sequence is proprietary.



Western blot analysis of MEKK3 expression in HEK293T (A), HeLa (B), LOVO (C), mouse muscle (D), rat muscle (E) whole cell lysates.



Immunohistochemical analysis of MEKK3 staining in human breast cancer formalin fixed paraffin embedded tissue section. The section was pre-treated using heat mediated antigen retrieval with sodium citrate buffer (pH 6.0). The section was then incubated with the antibody at room temperature and detected using an HRP conjugated compact polymer system. DAB was used as the chromogen. The section was then counterstained with haematoxylin and mounted with DPX.



Immunofluorescent analysis of MEKK3 staining in Raji cells. Formalin-fixed cells were permeabilized with 0.1% Triton X-100 in TBS for 5-10 minutes and blocked with 3% BSA-PBS for 30 minutes at room temperature. Cells were probed with the primary antibody in 3% BSA-PBS and incubated overnight at 4 °C in a humidified chamber. Cells were washed with PBST and incubated with a DyLight 594-conjugated secondary antibody (red) in PBS at room temperature in the dark.

Please note: All products are 'FOR RESEARCH USE ONLY. NOT FOR USE IN DIAGNOSTIC OR THERAPEUTIC PROCEDURES'.