

# Anti-Galectin 8 Antibody

Rabbit polyclonal antibody to Galectin 8  
Catalog # AP60021

## Product Information

---

<b>Application</b>	WB, IF/IC, IHC
<b>Primary Accession</b>	<a href="#">O00214</a>
<b>Other Accession</b>	<a href="#">Q9JL15</a>
<b>Reactivity</b>	Human, Mouse
<b>Host</b>	Rabbit
<b>Clonality</b>	Polyclonal
<b>Calculated MW</b>	35808

## Additional Information

---

<b>Gene ID</b>	3964
<b>Other Names</b>	Galectin-8; Gal-8; Po66 carbohydrate-binding protein; Po66-CBP; Prostate carcinoma tumor antigen 1; PCTA-1
<b>Target/Specificity</b>	KLH-conjugated synthetic peptide encompassing a sequence within the center region of human Galectin 8. The exact sequence is proprietary.
<b>Dilution</b>	WB--WB (1/500 - 1/1000), IHC (1/100 - 1/200), IF/IC (1/100 - 1/500) IF/IC--N/A IHC--WB (1/500 - 1/1000), IHC (1/100 - 1/200), IF/IC (1/100 - 1/500)
<b>Format</b>	Liquid in 0.42% Potassium phosphate, 0.87% Sodium chloride, pH 7.3, 30% glycerol, and 0.09% (W/V) sodium azide.
<b>Storage</b>	Store at -20 °C. Stable for 12 months from date of receipt

## Protein Information

---

<b>Name</b>	LGALS8 ( <a href="#">HGNC:6569</a> )
<b>Function</b>	Beta-galactoside-binding lectin that acts as a sensor of membrane damage caused by infection and restricts the proliferation of infecting pathogens by targeting them for autophagy (PubMed: <a href="#">22246324</a> , PubMed: <a href="#">28077878</a> ). Detects membrane rupture by binding beta-galactoside ligands located on the luminal side of the endosome membrane; these ligands becoming exposed to the cytoplasm following rupture (PubMed: <a href="#">22246324</a> , PubMed: <a href="#">28077878</a> ). Restricts infection by initiating autophagy via interaction with CALCOCO2/NDP52 (PubMed: <a href="#">22246324</a> , PubMed: <a href="#">28077878</a> ). Required to restrict infection of bacterial invasion such as <i>S.typhimurium</i> (PubMed: <a href="#">22246324</a> ). Also required to restrict infection of Picornaviridae viruses (PubMed: <a href="#">28077878</a> ). Has a marked preference for 3'-O-sialylated and

3'-O-sulfated glycans (PubMed:[21288902](#)).

**Cellular Location**

Cytoplasmic vesicle. Cytoplasm, cytosol

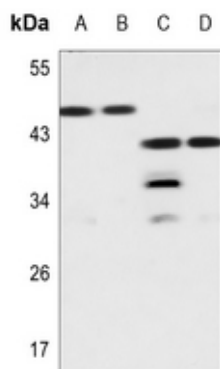
**Tissue Location**

Ubiquitous. Selective expression by prostate carcinomas versus normal prostate and benign prostatic hypertrophy

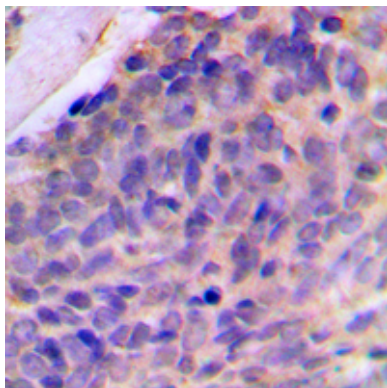
**Background**

KLH-conjugated synthetic peptide encompassing a sequence within the center region of human Galectin 8. The exact sequence is proprietary.

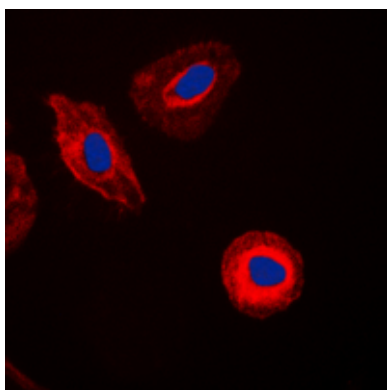
**Images**



Western blot analysis of Galectin 8 expression in HEK293T (A), U2OS (B), mouse kidney (C), mouse testis (D) whole cell lysates.



Immunohistochemical analysis of Galectin 8 staining in human breast cancer formalin fixed paraffin embedded tissue section. The section was pre-treated using heat mediated antigen retrieval with sodium citrate buffer (pH 6.0). The section was then incubated with the antibody at room temperature and detected using an HRP conjugated compact polymer system. DAB was used as the chromogen. The section was then counterstained with haematoxylin and mounted with DPX.



Immunofluorescent analysis of Galectin 8 staining in HepG2 cells. Formalin-fixed cells were permeabilized with 0.1% Triton X-100 in TBS for 5-10 minutes and blocked with 3% BSA-PBS for 30 minutes at room temperature. Cells were probed with the primary antibody in 3% BSA-PBS and incubated overnight at 4 °C in a humidified chamber. Cells were washed with PBST and incubated with a DyLight 594-conjugated secondary antibody (red) in PBS at room temperature in the dark. DAPI was used to stain the cell nuclei (blue).

Please note: All products are 'FOR RESEARCH USE ONLY. NOT FOR USE IN DIAGNOSTIC OR THERAPEUTIC PROCEDURES'.