

Anti-Hexokinase 3 Antibody

Rabbit polyclonal antibody to Hexokinase 3
Catalog # AP60013

Product Information

Application	WB, IHC
Primary Accession	P52790
Reactivity	Human, Mouse
Host	Rabbit
Clonality	Polyclonal
Calculated MW	99025

Additional Information

Gene ID	3101
Other Names	Hexokinase-3; Hexokinase type III; HK III
Target/Specificity	KLH-conjugated synthetic peptide encompassing a sequence within the C-term region of human Hexokinase 3. The exact sequence is proprietary.
Dilution	WB~~WB (1/500 - 1/1000), IHC (1/100 - 1/200) IHC~~WB (1/500 - 1/1000), IHC (1/100 - 1/200)
Format	Liquid in 0.42% Potassium phosphate, 0.87% Sodium chloride, pH 7.3, 30% glycerol, and 0.09% (W/V) sodium azide.
Storage	Store at -20 °C.Stable for 12 months from date of receipt

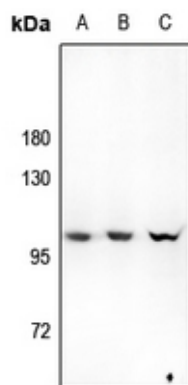
Protein Information

Name	HK3 (HGNC:4925)
Function	Catalyzes the phosphorylation of hexose, such as D-glucose and D-fructose, to hexose 6-phosphate (D-glucose 6-phosphate and D- fructose 6-phosphate, respectively) (PubMed: 8717435). Mediates the initial step of glycolysis by catalyzing phosphorylation of D-glucose to D-glucose 6-phosphate (PubMed: 8717435).

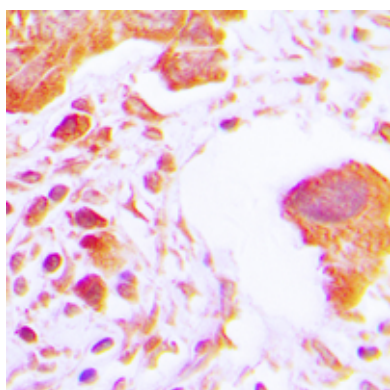
Background

KLH-conjugated synthetic peptide encompassing a sequence within the C-term region of human Hexokinase 3. The exact sequence is proprietary.

Images



Western blot analysis of Hexokinase 3 expression in LO2 (A), A549 (B), AML12 (C) whole cell lysates.



Immunohistochemical analysis of Hexokinase 3 staining in human lung cancer formalin fixed paraffin embedded tissue section. The section was pre-treated using heat mediated antigen retrieval with sodium citrate buffer (pH 6.0). The section was then incubated with the antibody at room temperature and detected using an HRP conjugated compact polymer system. DAB was used as the chromogen. The section was then counterstained with haematoxylin and mounted with DPX.

Please note: All products are 'FOR RESEARCH USE ONLY. NOT FOR USE IN DIAGNOSTIC OR THERAPEUTIC PROCEDURES'.