

Anti-Cytochrome P450 2A6 Antibody

Rabbit polyclonal antibody to Cytochrome P450 2A6

Catalog # AP59997

Product Information

Application	WB, IF/IC
Primary Accession	P11509
Reactivity	Human, Rat
Host	Rabbit
Clonality	Polyclonal
Calculated MW	56517

Additional Information

Gene ID	1548
Other Names	CYP2A3; Cytochrome P450 2A6; 1, 4-cineole 2-exo-monooxygenase; CYP1IA6; Coumarin 7-hydroxylase; Cytochrome P450 IIA3; Cytochrome P450(I)
Target/Specificity	KLH-conjugated synthetic peptide encompassing a sequence within the N-term region of human Cytochrome P450 2A6. The exact sequence is proprietary.
Dilution	WB~~WB (1/500 - 1/1000), IF/IC (1/100 - 1/500) IF/IC~~N/A
Format	Liquid in 0.42% Potassium phosphate, 0.87% Sodium chloride, pH 7.3, 30% glycerol, and 0.09% (W/V) sodium azide.
Storage	Store at -20 °C.Stable for 12 months from date of receipt

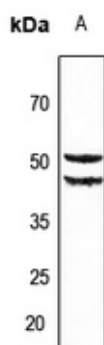
Protein Information

Name	CYP2A6
Synonyms	CYP2A3
Function	Exhibits a high coumarin 7-hydroxylase activity. Can act in the hydroxylation of the anti-cancer drugs cyclophosphamide and ifosfamide. Competent in the metabolic activation of aflatoxin B1. Constitutes the major nicotine C-oxidase. Acts as a 1,4-cineole 2-exo- monooxygenase. Possesses low phenacetin O-deethylation activity.
Cellular Location	Endoplasmic reticulum membrane; Peripheral membrane protein. Microsome membrane; Peripheral membrane protein
Tissue Location	Liver.

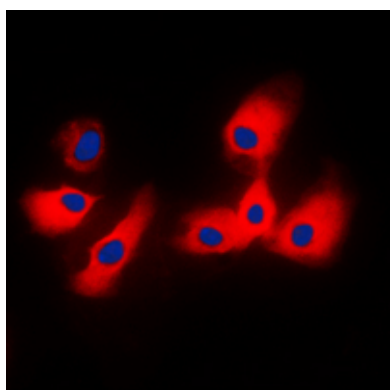
Background

KLH-conjugated synthetic peptide encompassing a sequence within the N-term region of human Cytochrome P450 2A6. The exact sequence is proprietary.

Images



Western blot analysis of Cytochrome P450 2A6 expression in rat liver (A) whole cell lysates.



Immunofluorescent analysis of Cytochrome P450 2A6 staining in HeLa cells. Formalin-fixed cells were permeabilized with 0.1% Triton X-100 in TBS for 5-10 minutes and blocked with 3% BSA-PBS for 30 minutes at room temperature. Cells were probed with the primary antibody in 3% BSA-PBS and incubated overnight at 4 °C in a humidified chamber. Cells were washed with PBST and incubated with a DyLight 594-conjugated secondary antibody (red) in PBS at room temperature in the dark. DAPI was used to stain the cell nuclei (blue).

Please note: All products are 'FOR RESEARCH USE ONLY. NOT FOR USE IN DIAGNOSTIC OR THERAPEUTIC PROCEDURES'.