

Anti-CSK Antibody

Rabbit polyclonal antibody to CSK

Catalog # AP59994

Product Information

Application	WB
Primary Accession	P41240
Other Accession	P41241
Reactivity	Human, Mouse, Rat, Monkey, Bovine
Host	Rabbit
Clonality	Polyclonal
Calculated MW	50704

Additional Information

Gene ID	1445
Other Names	Tyrosine-protein kinase CSK; C-Src kinase; Protein-tyrosine kinase CYL
Target/Specificity	Recognizes endogenous levels of CSK protein.
Dilution	WB~~WB (1/500 - 1/1000)
Format	Liquid in 0.42% Potassium phosphate, 0.87% Sodium chloride, pH 7.3, 30% glycerol, and 0.09% (W/V) sodium azide.
Storage	Store at -20 °C.Stable for 12 months from date of receipt

Protein Information

Name	CSK
Function	Non-receptor tyrosine-protein kinase that plays an important role in the regulation of cell growth, differentiation, migration and immune response. Phosphorylates tyrosine residues located in the C- terminal tails of Src-family kinases (SFKs) including LCK, SRC, HCK, FYN, LYN, CSK or YES1. Upon tail phosphorylation, Src-family members engage in intramolecular interactions between the phosphotyrosine tail and the SH2 domain that result in an inactive conformation. To inhibit SFKs, CSK is recruited to the plasma membrane via binding to transmembrane proteins or adapter proteins located near the plasma membrane. Suppresses signaling by various surface receptors, including T-cell receptor (TCR) and B-cell receptor (BCR) by phosphorylating and maintaining inactive several positive effectors such as FYN or LCK.
Cellular Location	Cytoplasm. Cell membrane. Note=Mainly cytoplasmic, also present in lipid rafts

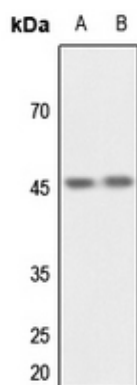
Tissue Location

Expressed in lung and macrophages.

Background

KLH-conjugated synthetic peptide encompassing a sequence within the N-term region of human CSK. The exact sequence is proprietary.

Images



Western blot analysis of CSK expression in mouse spleen (A), rat spleen (B) whole cell lysates.

Please note: All products are 'FOR RESEARCH USE ONLY. NOT FOR USE IN DIAGNOSTIC OR THERAPEUTIC PROCEDURES'.