

Anti-Cyclin E1 (pT395) Antibody

Rabbit polyclonal antibody to Cyclin E1 (pT395)

Catalog # AP59981

Product Information

Application	WB, IHC
Primary Accession	P24864
Other Accession	Q61457
Reactivity	Human, Mouse, Rat
Host	Rabbit
Clonality	Polyclonal
Calculated MW	47077

Additional Information

Gene ID	898
Other Names	CCNE; G1/S-specific cyclin-E1
Target/Specificity	KLH-conjugated synthetic peptide encompassing a sequence within the C-term region of human Cyclin E1 (pT395). The exact sequence is proprietary.
Dilution	WB~~WB (1/500 - 1/1000), IHC (1/100 - 1/200) IHC~~WB (1/500 - 1/1000), IHC (1/100 - 1/200)
Format	Liquid in 0.42% Potassium phosphate, 0.87% Sodium chloride, pH 7.3, 30% glycerol, and 0.09% (W/V) sodium azide.
Storage	Store at -20 °C.Stable for 12 months from date of receipt

Protein Information

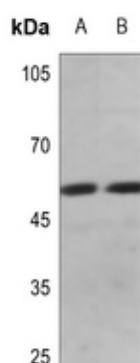
Name	CCNE1
Synonyms	CCNE
Function	Essential for the control of the cell cycle at the G1/S (start) transition.
Cellular Location	Nucleus.
Tissue Location	Highly expressed in testis and placenta. Low levels in bronchial epithelial cells.

Background

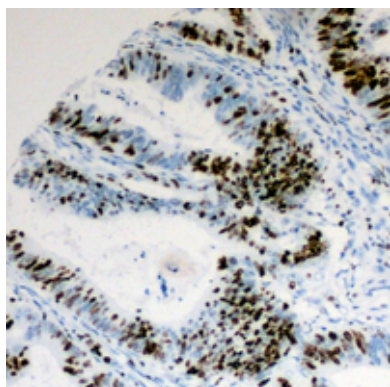
KLH-conjugated synthetic peptide encompassing a sequence within the C-term region of human Cyclin E1

(pT395). The exact sequence is proprietary.

Images



Western blot analysis of Cyclin E1 (pT395) expression in mouse kidney (A), rat kidney (B) whole cell lysates.



Immunohistochemical analysis of Cyclin E1 (pT395) staining in human colon cancer formalin fixed paraffin embedded tissue section. The section was pre-treated using heat mediated antigen retrieval with sodium citrate buffer (pH 6.0). The section was then incubated with the antibody at room temperature and detected using an HRP conjugated compact polymer system. DAB was used as the chromogen. The section was then counterstained with haematoxylin and mounted with DPX.

Please note: All products are 'FOR RESEARCH USE ONLY. NOT FOR USE IN DIAGNOSTIC OR THERAPEUTIC PROCEDURES'.