

# Anti-Caveolin 1 (pY14) Antibody

Rabbit polyclonal antibody to Caveolin 1 (pY14)  
Catalog # AP59979

## Product Information

---

<b>Application</b>	WB, IP
<b>Primary Accession</b>	<a href="#">Q03135</a>
<b>Other Accession</b>	<a href="#">P49817</a>
<b>Reactivity</b>	Human, Mouse, Rat, Pig, Bovine, Dog, SARS
<b>Host</b>	Rabbit
<b>Clonality</b>	Polyclonal

## Additional Information

---

<b>Other Names</b>	CAV; Caveolin-1
<b>Target/Specificity</b>	KLH-conjugated synthetic peptide encompassing a sequence within the N-term region of human Caveolin 1 (pY14). The exact sequence is proprietary.
<b>Dilution</b>	WB~~WB (1/500 - 1/1000), IP (1/10 - 1/100) IP~~N/A
<b>Format</b>	Liquid in 0.42% Potassium phosphate, 0.87% Sodium chloride, pH 7.3, 30% glycerol, and 0.09% (W/V) sodium azide.
<b>Storage</b>	Store at -20 °C. Stable for 12 months from date of receipt

## Protein Information

---

### Background

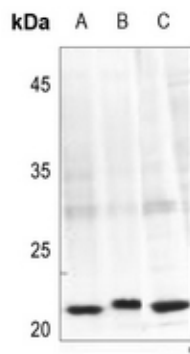
---

KLH-conjugated synthetic peptide encompassing a sequence within the N-term region of human Caveolin 1 (pY14). The exact sequence is proprietary.

### Images

---

Western blot analysis of Caveolin 1 (pY14) expression in SGC7901 (A), SGC7901-H2O2-5min (B), HEK293T (C) whole cell lysates.



Please note: All products are 'FOR RESEARCH USE ONLY. NOT FOR USE IN DIAGNOSTIC OR THERAPEUTIC PROCEDURES'.