

# Anti-Catalase (pY386) Antibody

Rabbit polyclonal antibody to Catalase (pY386)

Catalog # AP59978

## Product Information

---

Application	WB, IHC
Primary Accession	<a href="#">P04040</a>
Other Accession	<a href="#">P24270</a>
Reactivity	Human, Mouse, Rat, Zebrafish, Bovine, Drosophila
Host	Rabbit
Clonality	Polyclonal
Calculated MW	59756

## Additional Information

---

Gene ID	847
Other Names	Catalase
Target/Specificity	KLH-conjugated synthetic peptide encompassing a sequence within the center region of human Catalase (pY386). The exact sequence is proprietary.
Dilution	WB~~WB (1/500 - 1/1000), IHC (1/100 - 1/200) IHC~~WB (1/500 - 1/1000), IHC (1/100 - 1/200)
Format	Liquid in 0.42% Potassium phosphate, 0.87% Sodium chloride, pH 7.3, 30% glycerol, and 0.09% (W/V) sodium azide.
Storage	Store at -20 °C.Stable for 12 months from date of receipt

## Protein Information

---

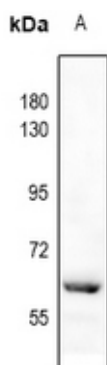
Name	CAT
Function	Catalyzes the degradation of hydrogen peroxide (H <sub>2</sub> O <sub>2</sub> ) generated by peroxisomal oxidases to water and oxygen, thereby protecting cells from the toxic effects of hydrogen peroxide (PubMed: <a href="#">7882369</a> ). Promotes growth of cells including T-cells, B-cells, myeloid leukemia cells, melanoma cells, mastocytoma cells and normal and transformed fibroblast cells (PubMed: <a href="#">7882369</a> ).
Cellular Location	Peroxisome matrix

## Background

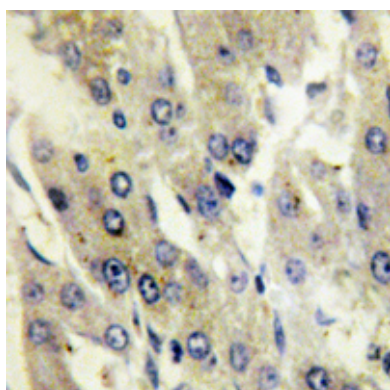
---

KLH-conjugated synthetic peptide encompassing a sequence within the center region of human Catalase (pY386). The exact sequence is proprietary.

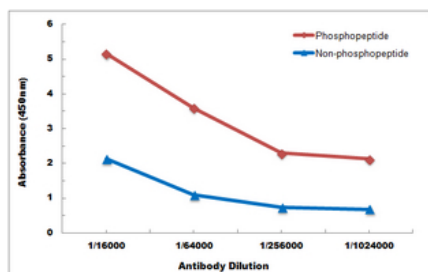
## Images



Western blot analysis of Catalase (pY386) expression in AML12 (A) whole cell lysates.



Immunohistochemical analysis of Catalase (pY386) staining in human liver formalin fixed paraffin embedded tissue section. The section was pre-treated using heat mediated antigen retrieval with sodium citrate buffer (pH 6.0). The section was then incubated with the antibody at room temperature and detected using an HRP conjugated compact polymer system. DAB was used as the chromogen. The section was then counterstained with haematoxylin and mounted with DPX.



Direct ELISA antibody dose-response curve using Anti-Catalase (pY386) Antibody. Antigen (phosphopeptide and non-phosphopeptide) concentration is 5 ug/ml. Goat Anti-Rabbit IgG (H&L) - HRP was used as the secondary antibody, and signal was developed by TMB substrate.

Please note: All products are 'FOR RESEARCH USE ONLY. NOT FOR USE IN DIAGNOSTIC OR THERAPEUTIC PROCEDURES'.