

# Anti-BMP8B Antibody

Rabbit polyclonal antibody to BMP8B

Catalog # AP59975

## Product Information

---

<b>Application</b>	WB
<b>Primary Accession</b>	<a href="#">P34820</a>
<b>Reactivity</b>	Human
<b>Host</b>	Rabbit
<b>Clonality</b>	Polyclonal
<b>Calculated MW</b>	44768

## Additional Information

---

<b>Gene ID</b>	656
<b>Other Names</b>	BMP8; Bone morphogenetic protein 8B; BMP-8; BMP-8B; Osteogenic protein 2; OP-2
<b>Target/Specificity</b>	KLH-conjugated synthetic peptide encompassing a sequence within the center region of human BMP8B. The exact sequence is proprietary.
<b>Dilution</b>	WB~~WB (1/500 - 1/1000)
<b>Format</b>	Liquid in 0.42% Potassium phosphate, 0.87% Sodium chloride, pH 7.3, 30% glycerol, and 0.09% (W/V) sodium azide.
<b>Storage</b>	Store at -20 °C.Stable for 12 months from date of receipt

## Protein Information

---

<b>Name</b>	BMP8B
<b>Synonyms</b>	BMP8
<b>Function</b>	Induces cartilage and bone formation. May be the osteoinductive factor responsible for the phenomenon of epithelial osteogenesis. Plays a role in calcium regulation and bone homeostasis (By similarity).
<b>Cellular Location</b>	Secreted.

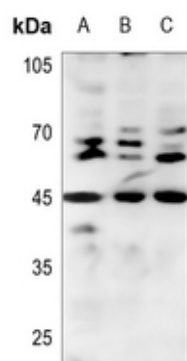
## Background

---

KLH-conjugated synthetic peptide encompassing a sequence within the center region of human BMP8B. The exact sequence is proprietary.

## Images

---



Western blot analysis of BMP8B expression in HEK293T (A), A549 (B), H446 (C) whole cell lysates.

Please note: All products are 'FOR RESEARCH USE ONLY. NOT FOR USE IN DIAGNOSTIC OR THERAPEUTIC PROCEDURES'.