

Anti-ALDOB Antibody

Rabbit polyclonal antibody to ALDOB

Catalog # AP59963

Product Information

Application	WB, IHC
Primary Accession	P05062
Other Accession	Q91Y97
Reactivity	Human, Mouse, Rat, Rabbit, Monkey, Pig
Host	Rabbit
Clonality	Polyclonal
Calculated MW	39473

Additional Information

Gene ID	229
Other Names	ALDB; Fructose-bisphosphate aldolase B; Liver-type aldolase
Target/Specificity	KLH-conjugated synthetic peptide encompassing a sequence within the center region of human ALDOB. The exact sequence is proprietary.
Dilution	WB~~WB (1/500 - 1/1000), IHC (1/100 - 1/200) IHC~~WB (1/500 - 1/1000), IHC (1/100 - 1/200)
Format	Liquid in 0.42% Potassium phosphate, 0.87% Sodium chloride, pH 7.3, 30% glycerol, and 0.09% (W/V) sodium azide.
Storage	Store at -20 °C.Stable for 12 months from date of receipt

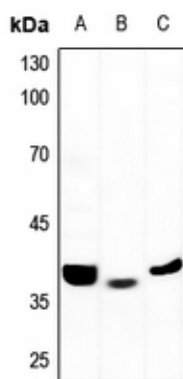
Protein Information

Name	ALDOB {ECO:0000303 PubMed:15880727, ECO:0000312 HGNC:HGNC:417}
Function	Catalyzes the aldol cleavage of fructose 1,6-biphosphate to form two triosephosphates dihydroxyacetone phosphate and D- glyceraldehyde 3-phosphate in glycolysis as well as the reverse stereospecific aldol addition reaction in gluconeogenesis. In fructolysis, metabolizes fructose 1-phosphate derived from the phosphorylation of dietary fructose by fructokinase into dihydroxyacetone phosphate and D-glyceraldehyde (PubMed: 10970798 , PubMed: 12205126 , PubMed: 20848650). Acts as an adapter independently of its enzymatic activity, exerts a tumor suppressor role by stabilizing the ternary complex with G6PD and TP53 to inhibit G6PD activity and keep oxidative pentose phosphate metabolism in check (PubMed: 35122041).
Cellular Location	Cytoplasm, cytosol. Cytoplasm, cytoskeleton, microtubule organizing center, centrosome, centriolar satellite

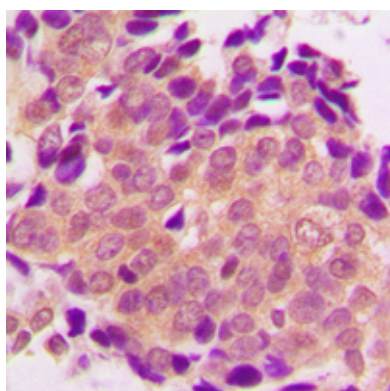
Background

KLH-conjugated synthetic peptide encompassing a sequence within the center region of human ALDOB. The exact sequence is proprietary.

Images



Western blot analysis of ALDOB expression in mouse liver (A), mouse kidney (B), rat liver (C) whole cell lysates.



Immunohistochemical analysis of ALDOB staining in human breast cancer formalin fixed paraffin embedded tissue section. The section was pre-treated using heat mediated antigen retrieval with sodium citrate buffer (pH 6.0). The section was then incubated with the antibody at room temperature and detected using an HRP conjugated compact polymer system. DAB was used as the chromogen. The section was then counterstained with haematoxylin and mounted with DPX.

Please note: All products are 'FOR RESEARCH USE ONLY. NOT FOR USE IN DIAGNOSTIC OR THERAPEUTIC PROCEDURES'.