

Anti-CALY Antibody

Rabbit polyclonal antibody to CALY
Catalog # AP59949

Product Information

Application	WB
Primary Accession	Q9NYX4
Other Accession	Q9DCA7
Reactivity	Human, Mouse, Rat
Host	Rabbit
Clonality	Polyclonal
Calculated MW	23434

Additional Information

Gene ID	50632
Other Names	DRD1IP; Neuron-specific vesicular protein calcyon
Target/Specificity	KLH-conjugated synthetic peptide encompassing a sequence within the center region of human CALY. The exact sequence is proprietary.
Dilution	WB~~WB (1/500 - 1/1000)
Format	Liquid in 0.42% Potassium phosphate, 0.87% Sodium chloride, pH 7.3, 30% glycerol, and 0.09% (W/V) sodium azide.
Storage	Store at -20 °C.Stable for 12 months from date of receipt

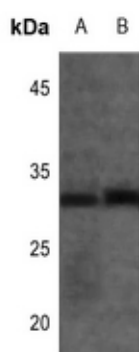
Protein Information

Name	CALY
Synonyms	DRD1IP
Function	Interacts with clathrin light chain A and stimulates clathrin self-assembly and clathrin-mediated endocytosis.
Cellular Location	Cytoplasmic vesicle membrane; Single-pass membrane protein. Cell membrane; Single-pass membrane protein
Tissue Location	Expressed in the pyramidal cells of the prefrontal cortex, in hypothalamus and in caudate nucleus. No expression in spleen. Up-regulated in the prefrontal cortex of schizophrenic patients with nearly twice the levels of non-schizophrenics

Background

KLH-conjugated synthetic peptide encompassing a sequence within the center region of human CALY. The exact sequence is proprietary.

Images



Western blot analysis of CALY expression in mouse liver (A), rat liver (B) whole cell lysates.

Please note: All products are 'FOR RESEARCH USE ONLY. NOT FOR USE IN DIAGNOSTIC OR THERAPEUTIC PROCEDURES'.