

Anti-ORC2 Antibody

Rabbit polyclonal antibody to ORC2

Catalog # AP59930

Product Information

Application	WB
Primary Accession	Q13416
Other Accession	Q60862
Reactivity	Human, Mouse, Rat, Monkey
Host	Rabbit
Clonality	Polyclonal
Calculated MW	65972

Additional Information

Gene ID	4999
Other Names	ORC2L; Origin recognition complex subunit 2
Target/Specificity	KLH-conjugated synthetic peptide encompassing a sequence within the center region of human ORC2. The exact sequence is proprietary.
Dilution	WB~~WB (1/500 - 1/1000)
Format	Liquid in 0.42% Potassium phosphate, 0.87% Sodium chloride, pH 7.3, 30% glycerol, and 0.09% (W/V) sodium azide.
Storage	Store at -20 °C.Stable for 12 months from date of receipt

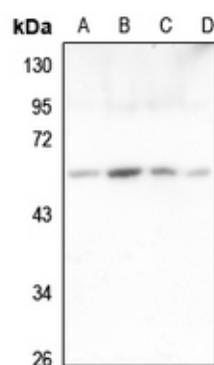
Protein Information

Name	ORC2
Synonyms	ORC2L
Function	Component of the origin recognition complex (ORC) that binds origins of replication. DNA-binding is ATP-dependent. The specific DNA sequences that define origins of replication have not been identified yet. ORC is required to assemble the pre-replication complex necessary to initiate DNA replication. Binds histone H3 and H4 trimethylation marks H3K9me3, H3K20me3 and H4K27me3. Stabilizes LRWD1, by protecting it from ubiquitin-mediated proteasomal degradation. Also stabilizes ORC3.
Cellular Location	Nucleus.

Background

KLH-conjugated synthetic peptide encompassing a sequence within the center region of human ORC2. The exact sequence is proprietary.

Images



Western blot analysis of ORC2 expression in HeLa (A), HGC27 (B), U2OS (C), A549 (D) whole cell lysates.

Please note: All products are 'FOR RESEARCH USE ONLY. NOT FOR USE IN DIAGNOSTIC OR THERAPEUTIC PROCEDURES'.