

Anti-HMGA1 Antibody

Rabbit polyclonal antibody to HMGA1

Catalog # AP59926

Product Information

Application	WB
Primary Accession	P17096
Other Accession	P17095
Reactivity	Human, Mouse, Rat, Pig, Bovine, Drosophila
Host	Rabbit
Clonality	Polyclonal
Calculated MW	11676

Additional Information

Gene ID	3159
Other Names	HMG1Y; High mobility group protein HMG-I/HMG-Y; HMG-I(Y); High mobility group AT-hook protein 1; High mobility group protein A1; High mobility group protein R
Target/Specificity	KLH-conjugated synthetic peptide encompassing a sequence within the C-term region of human HMGA1. The exact sequence is proprietary.
Dilution	WB~~WB (1/500 - 1/1000)
Format	Liquid in 0.42% Potassium phosphate, 0.87% Sodium chloride, pH 7.3, 30% glycerol, and 0.09% (W/V) sodium azide.
Storage	Store at -20 °C.Stable for 12 months from date of receipt

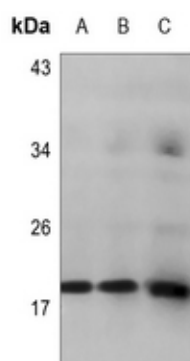
Protein Information

Name	HMGA1
Synonyms	HMG1Y
Function	HMG-I/Y bind preferentially to the minor groove of A+T rich regions in double-stranded DNA. It is suggested that these proteins could function in nucleosome phasing and in the 3'-end processing of mRNA transcripts. They are also involved in the transcription regulation of genes containing, or in close proximity to A+T-rich regions.
Cellular Location	Nucleus. Chromosome.

Background

KLH-conjugated synthetic peptide encompassing a sequence within the C-term region of human HMGA1. The exact sequence is proprietary.

Images



Western blot analysis of HMGA1 expression in A375 (A), U2OS (B), MCF7 (C) whole cell lysates.

Please note: All products are 'FOR RESEARCH USE ONLY. NOT FOR USE IN DIAGNOSTIC OR THERAPEUTIC PROCEDURES'.