

# Anti-Beta-galactosidase Antibody

Rabbit polyclonal antibody to Beta-galactosidase  
Catalog # AP59924

## Product Information

---

|                          |                        |
|--------------------------|------------------------|
| <b>Application</b>       | WB                     |
| <b>Primary Accession</b> | <a href="#">P16278</a> |
| <b>Reactivity</b>        | Human, Rat             |
| <b>Host</b>              | Rabbit                 |
| <b>Clonality</b>         | Polyclonal             |
| <b>Calculated MW</b>     | 76075                  |

## Additional Information

---

|                           |   |
|---------------------------|---|
| <b>Gene ID</b>            | 2720  |
| <b>Other Names</b>        | ELNR1; Beta-galactosidase; Acid beta-galactosidase; Lactase; Elastin receptor 1   |
| <b>Target/Specificity</b> | KLH-conjugated synthetic peptide encompassing a sequence within the center region of human Beta-galactosidase. The exact sequence is proprietary. |
| <b>Dilution</b>           | WB--WB (1/500 - 1/1000)   |
| <b>Format</b>             | Liquid in 0.42% Potassium phosphate, 0.87% Sodium chloride, pH 7.3, 30% glycerol, and 0.09% (W/V) sodium azide.                                   |
| <b>Storage</b>            | Store at -20 °C. Stable for 12 months from date of receipt  |

## Protein Information

---

|                          |   |
|--------------------------|---|
| <b>Name</b>              | GLB1 ( <a href="#">HGNC:4298</a> )  |
| <b>Synonyms</b>          | ELNR1   |
| <b>Function</b>          | [Isoform 1]: Cleaves beta-linked terminal galactosyl residues from gangliosides, glycoproteins, and glycosaminoglycans. |
| <b>Cellular Location</b> | [Isoform 1]: Lysosome   |
| <b>Tissue Location</b>   | Detected in placenta (at protein level) (PubMed:8383699). Detected in fibroblasts and testis (PubMed:2511208)           |

## Background

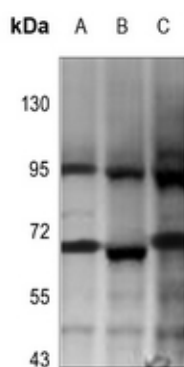
---

KLH-conjugated synthetic peptide encompassing a sequence within the center region of human

Beta-galactosidase. The exact sequence is proprietary.

## Images

---



Western blot analysis of Beta-galactosidase expression in PC3 (A), HepG2 (B), A549 (C) whole cell lysates.

Please note: All products are 'FOR RESEARCH USE ONLY. NOT FOR USE IN DIAGNOSTIC OR THERAPEUTIC PROCEDURES'.