

Anti-BMPR2 Antibody

Rabbit polyclonal antibody to BMPR2
Catalog # AP59917

Product Information

Application	WB
Primary Accession	Q13873
Other Accession	Q35607
Reactivity	Human, Mouse, Rat, Pig
Host	Rabbit
Clonality	Polyclonal
Calculated MW	115201

Additional Information

Gene ID	659
Other Names	PPH1; Bone morphogenetic protein receptor type-2; BMP type-2 receptor; BMPR-2; Bone morphogenetic protein receptor type II; BMP type II receptor; BMPR-II
Target/Specificity	KLH-conjugated synthetic peptide encompassing a sequence within the N-term region of human BMPR2. The exact sequence is proprietary.
Dilution	WB--WB (1/500 - 1/1000)
Format	Liquid in 0.42% Potassium phosphate, 0.87% Sodium chloride, pH 7.3, 30% glycerol, and 0.09% (W/V) sodium azide.
Storage	Store at -20 °C. Stable for 12 months from date of receipt

Protein Information

Name	BMPR2
Synonyms	PPH1
Function	On ligand binding, forms a receptor complex consisting of two type II and two type I transmembrane serine/threonine kinases. Type II receptors phosphorylate and activate type I receptors which autophosphorylate, then bind and activate SMAD transcriptional regulators. Can also mediate signaling through the activation of the p38MAPK cascade (PubMed: 12045205). Binds to BMP7, BMP2 and, less efficiently, BMP4. Binding is weak but enhanced by the presence of type I receptors for BMPs. Mediates induction of adipogenesis by GDF6. Promotes signaling also by binding to activin A/INHBA (PubMed: 24018044).

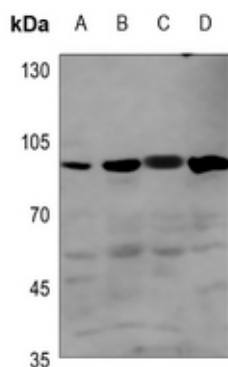
Cellular Location Cell membrane; Single-pass type I membrane protein

Tissue Location Highly expressed in heart and liver.

Background

KLH-conjugated synthetic peptide encompassing a sequence within the N-term region of human BMPR2. The exact sequence is proprietary.

Images



Western blot analysis of BMPR2 expression in mouse kidney (A), mouse heart (B), rat kidney (C), rat heart (D) whole cell lysates.

Please note: All products are 'FOR RESEARCH USE ONLY. NOT FOR USE IN DIAGNOSTIC OR THERAPEUTIC PROCEDURES'.