

Anti-CD200R Antibody

Rabbit polyclonal antibody to CD200R
Catalog # AP59895

Product Information

Application	WB
Primary Accession	Q8TD46
Reactivity	Human, Mouse, Rat
Host	Rabbit
Clonality	Polyclonal
Calculated MW	39041

Additional Information

Gene ID	131450
Other Names	CD200R; CRTR2; MOX2R; OX2R; Cell surface glycoprotein CD200 receptor 1; CD200 cell surface glycoprotein receptor; Cell surface glycoprotein OX2 receptor 1
Target/Specificity	KLH-conjugated synthetic peptide encompassing a sequence within the C-term region of human CD200R. The exact sequence is proprietary.
Dilution	WB~~WB (1/500 - 1/1000)
Format	Liquid in 0.42% Potassium phosphate, 0.87% Sodium chloride, pH 7.3, 30% glycerol, and 0.09% (W/V) sodium azide.
Storage	Store at -20 °C. Stable for 12 months from date of receipt

Protein Information

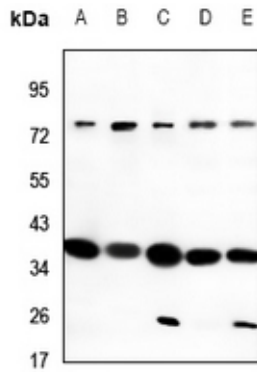
Name	CD200R1
Synonyms	CD200R, CRTR2, MOX2R, OX2R
Function	Inhibitory receptor for the CD200/OX2 cell surface glycoprotein. Limits inflammation by inhibiting the expression of pro- inflammatory molecules including TNF, interferons, and inducible nitric oxide synthase (iNOS) in response to selected stimuli. Also binds to HHV-8 K14 viral CD200 homolog with identical affinity and kinetics as the host CD200.
Cellular Location	[Isoform 1]: Cell membrane; Single-pass type I membrane protein [Isoform 2]: Secreted.
Tissue Location	Expressed in granulocytes, monocytes, most T-cells, neutrophils, basophils and a subset of NK, NKT and B-cells (at protein level). Expressed in bone

marrow, lymph nodes, spleen, lung, liver, spinal cord, kidney. Expressed in monocyte-derived dendritic and mast cells.

Background

KLH-conjugated synthetic peptide encompassing a sequence within the C-term region of human CD200R. The exact sequence is proprietary.

Images



Western blot analysis of CD200R expression in AML12 (A), PC12 (B), HEK293T (C), A549 (D), LO2 (E) whole cell lysates.

Please note: All products are 'FOR RESEARCH USE ONLY. NOT FOR USE IN DIAGNOSTIC OR THERAPEUTIC PROCEDURES'.