

# Anti-APOA1BP Antibody

Rabbit polyclonal antibody to APOA1BP

Catalog # AP59892

## Product Information

Application	WB, IF/IC
Primary Accession	<a href="#">Q8NCW5</a>
Other Accession	<a href="#">Q8K4Z3</a>
Reactivity	Human, Mouse, Rat, Pig, Bovine, Drosophila
Host	Rabbit
Clonality	Polyclonal
Calculated MW	31675

## Additional Information

Gene ID	128240
Other Names	AIBP; YJEFN1; NAD(P)H-hydrate epimerase; Apolipoprotein A-I-binding protein; AI-BP; NAD(P)HX epimerase; YjeF N-terminal domain-containing protein 1; YjeF_N1
Target/Specificity	KLH-conjugated synthetic peptide encompassing a sequence within the center region of human APOA1BP. The exact sequence is proprietary.
Dilution	WB~~WB (1/500 - 1/1000), IF/IC (1/100 - 1/500) IF/IC~~N/A
Format	Liquid in 0.42% Potassium phosphate, 0.87% Sodium chloride, pH 7.3, 30% glycerol, and 0.09% (W/V) sodium azide.
Storage	Store at -20 °C.Stable for 12 months from date of receipt

## Protein Information

Name	NAXE ( <a href="#">HGNC:18453</a> )
Function	Catalyzes the epimerization of the S- and R-forms of NAD(P)HX, a damaged form of NAD(P)H that is a result of enzymatic or heat-dependent hydration (By similarity) (PubMed: <a href="#">27616477</a> ). This is a prerequisite for the S-specific NAD(P)H-hydrate dehydratase to allow the repair of both epimers of NAD(P)HX (By similarity). Accelerates cholesterol efflux from endothelial cells to high-density lipoprotein (HDL) and thereby regulates angiogenesis (PubMed: <a href="#">23719382</a> ).
Cellular Location	Mitochondrion {ECO:0000255 HAMAP-Rule:MF_03159}. Secreted {ECO:0000255 HAMAP-Rule:MF_03159, ECO:0000269 PubMed:11991719}. Note=In sperm, secretion gradually increases during capacitation. {ECO:0000255 HAMAP-Rule:MF_03159}

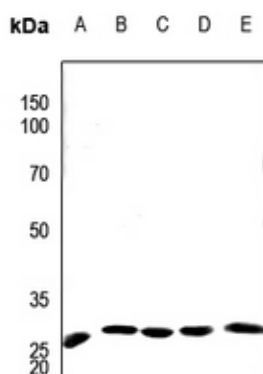
## Tissue Location

Ubiquitously expressed, with highest levels in kidney, heart and liver. Present in cerebrospinal fluid and urine but not in serum from healthy patients. Present in serum of sepsis patients (at protein level).

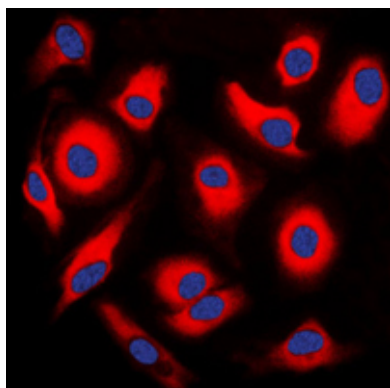
## Background

KLH-conjugated synthetic peptide encompassing a sequence within the center region of human APOA1BP. The exact sequence is proprietary.

## Images



Western blot analysis of APOA1BP expression in DLD (A), mouse liver (B), mouse heart (C), rat kidney (D), rat heart (E) whole cell lysates.



Immunofluorescent analysis of APOA1BP staining in HEK293T cells. Formalin-fixed cells were permeabilized with 0.1% Triton X-100 in TBS for 5-10 minutes and blocked with 3% BSA-PBS for 30 minutes at room temperature. Cells were probed with the primary antibody in 3% BSA-PBS and incubated overnight at 4 °C in a humidified chamber. Cells were washed with PBST and incubated with a DyLight 594-conjugated secondary antibody (red) in PBS at room temperature in the dark. DAPI was used to stain the cell nuclei (blue).

Please note: All products are 'FOR RESEARCH USE ONLY. NOT FOR USE IN DIAGNOSTIC OR THERAPEUTIC PROCEDURES'.