

Anti-MYL7 Antibody

Rabbit polyclonal antibody to MYL7

Catalog # AP59863

Product Information

Application	WB
Primary Accession	Q01449
Other Accession	Q9QVP4
Reactivity	Human, Mouse, Rat
Host	Rabbit
Clonality	Polyclonal
Calculated MW	19448

Additional Information

Gene ID	58498
Other Names	MYL2A; MYLC2A; Myosin regulatory light chain 2, atrial isoform; MLC-2a; MLC2a; Myosin light chain 2a; Myosin regulatory light chain 7
Target/Specificity	KLH-conjugated synthetic peptide encompassing a sequence within the center region of human MYL7. The exact sequence is proprietary.
Dilution	WB~~WB (1/500 - 1/1000)
Format	Liquid in 0.42% Potassium phosphate, 0.87% Sodium chloride, pH 7.3, 30% glycerol, and 0.09% (W/V) sodium azide.
Storage	Store at -20 °C.Stable for 12 months from date of receipt

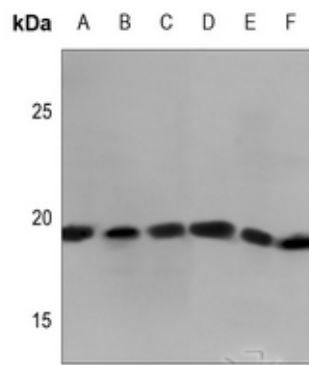
Protein Information

Name	MYL7
Synonyms	MYL2A, MYLC2A
Tissue Location	Predominantly expressed in adult atrial muscle.

Background

KLH-conjugated synthetic peptide encompassing a sequence within the center region of human MYL7. The exact sequence is proprietary.

Images



Western blot analysis of MYL7 expression in HEK293T (A), DLD (B), U2OS (C), mouse spleen (D), rat kidney (E), rat spleen (F) whole cell lysates.

Please note: All products are 'FOR RESEARCH USE ONLY. NOT FOR USE IN DIAGNOSTIC OR THERAPEUTIC PROCEDURES'.