

Anti-CYSLTR2 Antibody

Rabbit polyclonal antibody to CYSLTR2

Catalog # AP59857

Product Information

Application	WB
Primary Accession	Q9NS75
Reactivity	Human, Mouse, Rat, Pig, Bovine
Host	Rabbit
Clonality	Polyclonal
Calculated MW	39635

Additional Information

Gene ID	57105
Other Names	CYSLT2; CYSLT2R; Cysteinyl leukotriene receptor 2; CysLTR2; G-protein coupled receptor GPCR21; hGPCR21; G-protein coupled receptor HG57; HPN321
Target/Specificity	KLH-conjugated synthetic peptide encompassing a sequence within the C-term region of human CYSLTR2. The exact sequence is proprietary.
Dilution	WB~~WB (1/500 - 1/1000)
Format	Liquid in 0.42% Potassium phosphate, 0.87% Sodium chloride, pH 7.3, 30% glycerol, and 0.09% (W/V) sodium azide.
Storage	Store at -20 °C.Stable for 12 months from date of receipt

Protein Information

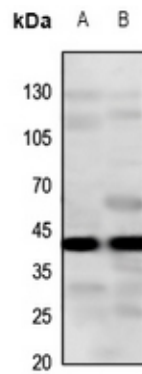
Name	CYSLTR2
Synonyms	CYSLT2, CYSLT2R
Function	Receptor for cysteinyl leukotrienes. The response is mediated via a G-protein that activates a phosphatidylinositol-calcium second messenger system. Stimulation by BAY u9773, a partial agonist, induces specific contractions of pulmonary veins and might also have an indirect role in the relaxation of the pulmonary vascular endothelium. The rank order of affinities for the leukotrienes is LTC4 = LTD4 >> LTE4.
Cellular Location	Cell membrane; Multi-pass membrane protein.
Tissue Location	Widely expressed, with highest levels in the heart, placenta, spleen, peripheral blood leukocytes and adrenal gland. In lung, expressed in the interstitial

macrophages, and slightly in smooth muscle cells

Background

KLH-conjugated synthetic peptide encompassing a sequence within the C-term region of human CYSLTR2. The exact sequence is proprietary.

Images



Western blot analysis of CYSLTR2 expression in rat heart (A), mouse spleen (B) whole cell lysates.

Please note: All products are 'FOR RESEARCH USE ONLY. NOT FOR USE IN DIAGNOSTIC OR THERAPEUTIC PROCEDURES'.