

Anti-TRIM68 Antibody

Rabbit polyclonal antibody to TRIM68

Catalog # AP59848

Product Information

Application	WB
Primary Accession	Q6AZZ1
Reactivity	Human, Mouse, Rat, Monkey
Host	Rabbit
Clonality	Polyclonal
Calculated MW	56259

Additional Information

Gene ID	55128
Other Names	GC109; RNF137; SS56; E3 ubiquitin-protein ligase TRIM68; RING finger protein 137; SSA protein SS-56; SS-56; Tripartite motif-containing protein 68
Target/Specificity	KLH-conjugated synthetic peptide encompassing a sequence within the center region of human TRIM68. The exact sequence is proprietary.
Dilution	WB~~WB (1/500 - 1/1000)
Format	Liquid in 0.42% Potassium phosphate, 0.87% Sodium chloride, pH 7.3, 30% glycerol, and 0.09% (W/V) sodium azide.
Storage	Store at -20 °C.Stable for 12 months from date of receipt

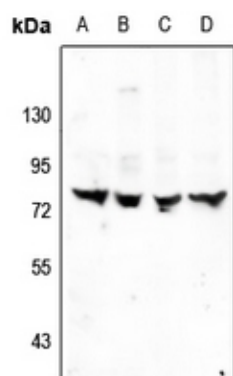
Protein Information

Name	TRIM68
Synonyms	GC109, RNF137, SS56
Function	Functions as a ubiquitin E3 ligase. Acts as a coactivator of androgen receptor (AR) depending on its ubiquitin ligase activity.
Cellular Location	Cytoplasm, perinuclear region. Nucleus. Note=Colocalized with AR in nucleus
Tissue Location	Widely expressed. Expressed at high levels in prostate cancer cell lines. Up-regulation could be restricted to androgen-dependent cells.

Background

KLH-conjugated synthetic peptide encompassing a sequence within the center region of human TRIM68. The exact sequence is proprietary.

Images



Western blot analysis of TRIM68 expression in CT26 (A), C6 (B), HEK293T (C), A549 (D) whole cell lysates.

Please note: All products are 'FOR RESEARCH USE ONLY. NOT FOR USE IN DIAGNOSTIC OR THERAPEUTIC PROCEDURES'.