

Anti-ANAPC Antibody

Rabbit polyclonal antibody to ANAPC
Catalog # AP59840

Product Information

Application	WB, IP
Primary Accession	Q9UJX4
Reactivity	Human, Monkey
Host	Rabbit
Clonality	Polyclonal
Calculated MW	85077

Additional Information

Gene ID	51433
Other Names	APC5; Anaphase-promoting complex subunit 5; APC5; Cyclosome subunit 5
Target/Specificity	KLH-conjugated synthetic peptide encompassing a sequence within the center region of human ANAPC. The exact sequence is proprietary.
Dilution	WB~~WB (1/500 - 1/1000), IP (1/10 - 1/100) IP~~N/A
Format	Liquid in 0.42% Potassium phosphate, 0.87% Sodium chloride, pH 7.3, 30% glycerol, and 0.09% (W/V) sodium azide.
Storage	Store at -20 °C.Stable for 12 months from date of receipt

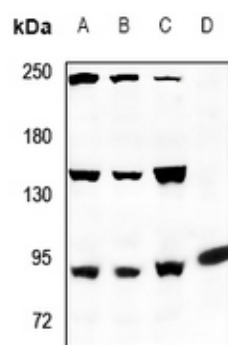
Protein Information

Name	ANAPC5
Synonyms	APC5
Function	Component of the anaphase promoting complex/cyclosome (APC/C), a cell cycle-regulated E3 ubiquitin ligase that controls progression through mitosis and the G1 phase of the cell cycle (PubMed: 18485873). The APC/C complex acts by mediating ubiquitination and subsequent degradation of target proteins: it mainly mediates the formation of 'Lys-11'-linked polyubiquitin chains and, to a lower extent, the formation of 'Lys-48'- and 'Lys-63'-linked polyubiquitin chains (PubMed: 18485873). The APC/C complex catalyzes assembly of branched 'Lys-11'-/'Lys-48'-linked branched ubiquitin chains on target proteins (PubMed: 29033132).
Cellular Location	Nucleus. Cytoplasm, cytoskeleton, spindle

Background

KLH-conjugated synthetic peptide encompassing a sequence within the center region of human ANAPC. The exact sequence is proprietary.

Images



Western blot analysis of ANAPC expression in LO2 (A), HepG2 (B), HEK293T (C), A2780 (D) whole cell lysates.

Please note: All products are 'FOR RESEARCH USE ONLY. NOT FOR USE IN DIAGNOSTIC OR THERAPEUTIC PROCEDURES'.