

Anti-Cytochrome P450 39A1 Antibody

Rabbit polyclonal antibody to Cytochrome P450 39A1

Catalog # AP59839

Product Information

Application	WB, IHC
Primary Accession	Q9NYL5
Other Accession	Q9JKJ9
Reactivity	Human, Mouse, Rat, Monkey, Pig
Host	Rabbit
Clonality	Polyclonal
Calculated MW	54116

Additional Information

Gene ID	51302
Other Names	24-hydroxycholesterol 7-alpha-hydroxylase; Cytochrome P450 39A1; hCYP39A1; Oxysterol 7-alpha-hydroxylase
Target/Specificity	KLH-conjugated synthetic peptide encompassing a sequence within the C-term region of human Cytochrome P450 39A1. The exact sequence is proprietary.
Dilution	WB~~WB (1/500 - 1/1000), IHC (1/100 - 1/200) IHC~~WB (1/500 - 1/1000), IHC (1/100 - 1/200)
Format	Liquid in 0.42% Potassium phosphate, 0.87% Sodium chloride, pH 7.3, 30% glycerol, and 0.09% (W/V) sodium azide.
Storage	Store at -20 °C.Stable for 12 months from date of receipt

Protein Information

Name	CYP39A1 {ECO:0000303 PubMed:25201972, ECO:0000312 HGNC:HGNC:17449}
Function	<p>A cytochrome P450 monooxygenase involved in neural cholesterol clearance through bile acid synthesis (PubMed:10748047, PubMed:25201972). Catalyzes 7-alpha hydroxylation of (24S)- hydroxycholesterol, a neural oxysterol that is metabolized to bile acids in the liver (PubMed:10748047, PubMed:25201972). Mechanistically, uses molecular oxygen inserting one oxygen atom into a substrate, and reducing the second into a water molecule, with two electrons provided by NADPH via cytochrome P450 reductase (CPR; NADPH-ferrihemoprotein reductase) (PubMed:10748047, PubMed:25201972).</p> <p>Endoplasmic reticulum membrane {ECO:0000250 UniProtKB:Q64654};</p>

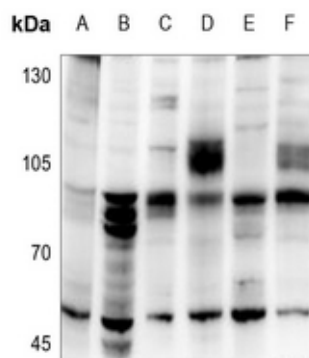
Cellular Location Multi-pass membrane protein. Microsome membrane {ECO:0000250|UniProtKB:Q64654}; Multi-pass membrane protein

Tissue Location Liver specific..

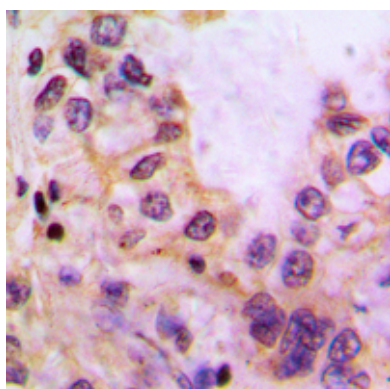
Background

KLH-conjugated synthetic peptide encompassing a sequence within the C-term region of human Cytochrome P450 39A1. The exact sequence is proprietary.

Images



Western blot analysis of Cytochrome P450 39A1 expression in C6 (A), AML12 (B), PC3 (C), Panc1 (D), HEK293T (E), HepG2 (F) whole cell lysates.



Immunohistochemical analysis of Cytochrome P450 39A1 staining in human liver cancer formalin fixed paraffin embedded tissue section. The section was pre-treated using heat mediated antigen retrieval with sodium citrate buffer (pH 6.0). The section was then incubated with the antibody at room temperature and detected using an HRP conjugated compact polymer system. DAB was used as the chromogen. The section was then counterstained with haematoxylin and mounted with DPX.

Please note: All products are 'FOR RESEARCH USE ONLY. NOT FOR USE IN DIAGNOSTIC OR THERAPEUTIC PROCEDURES'.